

DESCRIPTION

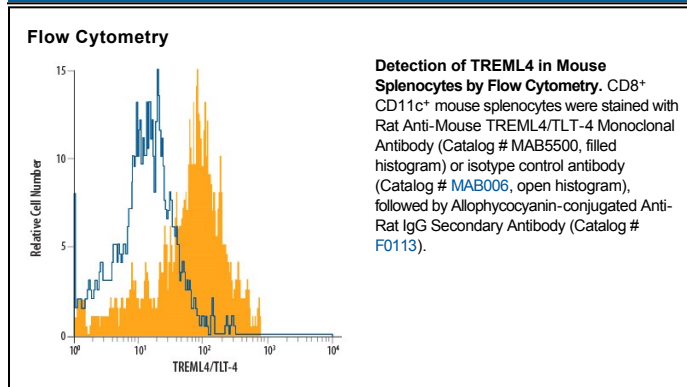
Species Reactivity	Mouse
Specificity	Detects mouse TREML4/TLT-4 in ELISAs.
Source	Monoclonal Rat IgG _{2A} Clone # 817914
Purification	Protein A or G purified from hybridoma culture supernatant
Immunogen	Mouse myeloma cell line NS0-derived recombinant mouse TREML4/TLT-4 Gly25-Pro195 Accession # Q3LRV9
Formulation	Lyophilized from a 0.2 µm filtered solution in PBS with Trehalose. See Certificate of Analysis for details. *Small pack size (-SP) is supplied as a 0.2 µm filtered solution in PBS.

APPLICATIONS

Please Note: Optimal dilutions should be determined by each laboratory for each application. *General Protocols* are available in the *Technical Information* section on our website.

	Recommended Concentration	Sample
Flow Cytometry	2.5 µg/10 ⁶ cells	See Below
CyTOF-ready	Ready to be labeled using established conjugation methods. No BSA or other carrier proteins that could interfere with conjugation.	

DATA



PREPARATION AND STORAGE

Reconstitution	Sterile PBS to a final concentration of 0.5 mg/mL.
Shipping	The product is shipped at ambient temperature. Upon receipt, store it immediately at the temperature recommended below. *Small pack size (-SP) is shipped with polar packs. Upon receipt, store it immediately at -20 to -70 °C
Stability & Storage	Use a manual defrost freezer and avoid repeated freeze-thaw cycles. <ul style="list-style-type: none"> ● 12 months from date of receipt, -20 to -70 °C as supplied. ● 1 month, 2 to 8 °C under sterile conditions after reconstitution. ● 6 months, -20 to -70 °C under sterile conditions after reconstitution.

BACKGROUND

TREML4 (Triggering Receptor Expressed on Myeloid cells-Like 4), also known as TLT4, is a 53-55 kDa member of the Ig superfamily. It is likely expressed by leukocytes, and based on its structure, may act as an activating receptor. Mature mouse TREML4 is a type I transmembrane (TM) glycoprotein that is 235 amino acids (aa) in length. It contains a 171 aa extracellular region (aa 29-199) with a V-type Ig-like domain (aa 29-122); the TM segment contains one Lys residue. There is one splice variant that shows a deletion of aa 21-24, a segment that lies in the putative signal sequence. Rodent and human TREML4 are highly divergent, and thus over aa 25-195, mouse TREML4 shares 78% aa sequence identity with rat TREML4, but only 52% aa sequence identity with human TREML4.