

DESCRIPTION

Species Reactivity	Human
Specificity	Detects human Vang-like Protein 1/VANGL1 in direct ELISAs and Western blots. In direct ELISAs and Western blots, slight cross-reactivity with recombinant human VANGL2 is observed.
Source	Monoclonal Mouse IgG _{2B} Clone # 497707
Purification	Protein A or G purified from hybridoma culture supernatant
Immunogen	<i>E. coli</i> -derived recombinant human Vang-like Protein 1/VANGL1 Glu242-Val524 Accession # Q8TAA9
Formulation	Lyophilized from a 0.2 µm filtered solution in PBS with Trehalose. See Certificate of Analysis for details. *Small pack size (-SP) is supplied as a 0.2 µm filtered solution in PBS.

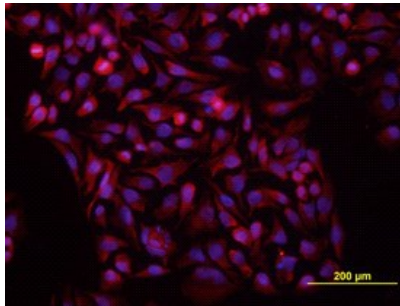
APPLICATIONS

Please Note: Optimal dilutions should be determined by each laboratory for each application. *General Protocols* are available in the *Technical Information* section on our website.

	Recommended Concentration	Sample
Western Blot	1 µg/mL	Recombinant Human Vang-like Protein 1/VANGL1
Immunocytochemistry	8-25 µg/mL	See Below

DATA

Immunocytochemistry



Vang-like Protein 1/VANGL1 in HeLa Human Cell Line. Vang-like Protein 1/VANGL1 was detected in immersion fixed HeLa human cervical epithelial carcinoma cell line using Human Vang-like Protein 1/VANGL1 Monoclonal Antibody (Catalog # MAB5476) at 10 µg/mL for 3 hours at room temperature. Cells were stained using the NorthernLights™ 557-conjugated Anti-Mouse IgG Secondary Antibody (red; Catalog # NL007) and counter-stained with DAPI (blue). View our protocol for [Fluorescent ICC Staining of Cells on Coverslips](#).

PREPARATION AND STORAGE

Reconstitution	Reconstitute at 0.5 mg/mL in sterile PBS.
Shipping	The product is shipped at ambient temperature. Upon receipt, store it immediately at the temperature recommended below. *Small pack size (-SP) is shipped with polar packs. Upon receipt, store it immediately at -20 to -70 °C
Stability & Storage	Use a manual defrost freezer and avoid repeated freeze-thaw cycles. <ul style="list-style-type: none"> ● 12 months from date of receipt, -20 to -70 °C as supplied. ● 1 month, 2 to 8 °C under sterile conditions after reconstitution. ● 6 months, -20 to -70 °C under sterile conditions after reconstitution.

BACKGROUND

Human Van Gogh-like protein 1 (VANGL1; also Vang-like Protein 1, strabismus 2, loop tail protein 2 homolog, LPP2) is a 60 kDa (predicted) member of the Vang family of proteins. VANGL1 is 524 amino acids (aa) in length and contains four transmembrane regions and the C-terminal Ser/Thr-X-Val motif, but lacks a signal sequence. There are two isoforms for VANGL1. In isoform 2, residues 67-68 found in isoform 1 are deleted. Human VANGL1 shares 95% aa sequence identity with mouse VANGL1. The glycoprotein is ubiquitously expressed in normal tissues and is upregulated in many cancer cell lines. VANGL1 is predicted to be a tumor suppressor gene. Mutations in VANGL1 are associated with neural tube defects.