

DESCRIPTION

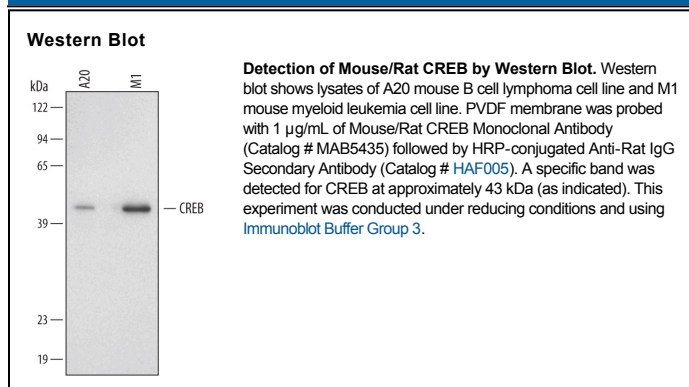
Species Reactivity	Mouse/Rat
Specificity	The antibody detects endogenous mouse and rat CREB on Western blots.
Source	Monoclonal Rat IgG _{2A} Clone # 485422
Purification	Protein A or G purified from hybridoma culture supernatant
Immunogen	<i>E. coli</i> -derived recombinant mouse CREB Met1-Lys69 Accession # NP_001032815
Formulation	Lyophilized from a 0.2 µm filtered solution in PBS with Trehalose. See Certificate of Analysis for details. *Small pack size (-SP) is supplied as a 0.2 µm filtered solution in PBS.

APPLICATIONS

Please Note: Optimal dilutions should be determined by each laboratory for each application. *General Protocols* are available in the *Technical Information* section on our website.

	Recommended Concentration	Sample
Western Blot	1 µg/mL	See Below

DATA



PREPARATION AND STORAGE

Reconstitution	Reconstitute at 0.5 mg/mL in sterile PBS.
Shipping	The product is shipped at ambient temperature. Upon receipt, store it immediately at the temperature recommended below. *Small pack size (-SP) is shipped with polar packs. Upon receipt, store it immediately at -20 to -70 °C
Stability & Storage	Use a manual defrost freezer and avoid repeated freeze-thaw cycles. <ul style="list-style-type: none"> ● 12 months from date of receipt, -20 to -70 °C as supplied. ● 1 month, 2 to 8 °C under sterile conditions after reconstitution. ● 6 months, -20 to -70 °C under sterile conditions after reconstitution.

BACKGROUND

The cAMP response element binding protein (CREB), also known as CREB1, belongs to the bZIP family of transcription factors. Each bZIP family member contains a basic domain that mediates DNA binding and a leucine zipper domain that facilitates dimerization. Within the promoter of target genes, CREB dimers bind cAMP response elements, defined by the palindromic consensus sequence TGACGTCA. CREB becomes phosphorylated at specific residues in response to DNA damage and circadian cycles.