

DESCRIPTION

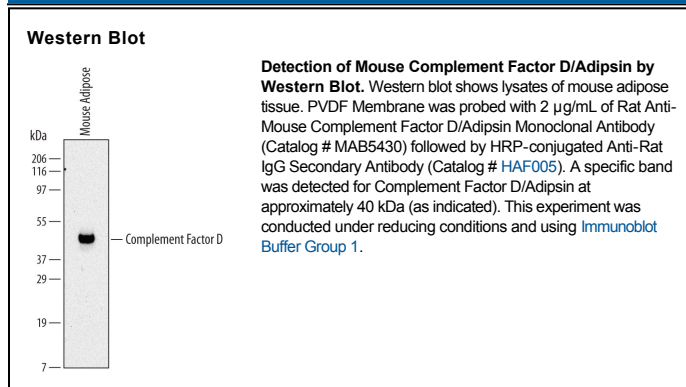
Species Reactivity	Mouse
Specificity	Detects mouse Complement Factor D/Adipsin in direct ELISAs and Western blots. In direct ELISAs, no cross-reactivity with recombinant human (rh) Complement Factors B, D,H, I or rhGranzyme A is observed.
Source	Monoclonal Rat IgG ₁ Clone # 577620
Purification	Protein A or G purified from hybridoma culture supernatant
Immunogen	NS0 cell-derived recombinant mouse Complement Factor D/Adipsin Ile26-Ser259 Accession # P03953
Formulation	Lyophilized from a 0.2 µm filtered solution in PBS with Trehalose. See Certificate of Analysis for details. *Small pack size (-SP) is supplied as a 0.2 µm filtered solution in PBS.

APPLICATIONS

Please Note: Optimal dilutions should be determined by each laboratory for each application. *General Protocols* are available in the *Technical Information* section on our website.

	Recommended Concentration	Sample
Western Blot	2 µg/mL	See Below
Immunoprecipitation	25 µg/mL	Conditioned cell culture medium spiked with Recombinant Human or Recombinant Mouse Complement Factor D, see our available Western blot detection antibodies

DATA



PREPARATION AND STORAGE

Reconstitution	Reconstitute at 0.5 mg/mL in sterile PBS.
Shipping	The product is shipped at ambient temperature. Upon receipt, store it immediately at the temperature recommended below. *Small pack size (-SP) is shipped with polar packs. Upon receipt, store it immediately at -20 to -70 °C
Stability & Storage	Use a manual defrost freezer and avoid repeated freeze-thaw cycles. <ul style="list-style-type: none"> • 12 months from date of receipt, -20 to -70 °C as supplied. • 1 month, 2 to 8 °C under sterile conditions after reconstitution. • 6 months, -20 to -70 °C under sterile conditions after reconstitution.

BACKGROUND

Complement Factor D (also Adipsin, C3 convertase activator and Properdin factor D) is a 37-43 kDa member of the S1 peptidase family of enzymes. In mouse, it is secreted by fat cells and helps form C3 convertase, a complex of C3b, Factor B and Factor D. This complex cleaves C3 into C3b and C3a, the latter of which is converted into ASP, a molecule that binds the adipocyte receptor C5L2 and induces triglyceride synthesis. Mature mouse Complement Factor D contains one peptidase S1 domain that cleaves an Arg-Lys bond. There are at least two potential alternative splice forms. One shows a two aa substitution for aa 1-71, and a second shows a 15 aa substitution for aa 1-107. Mature mouse Complement Factor D shares 85% and 68% aa identity with rat and human Complement Factor D, respectively.