

DESCRIPTION

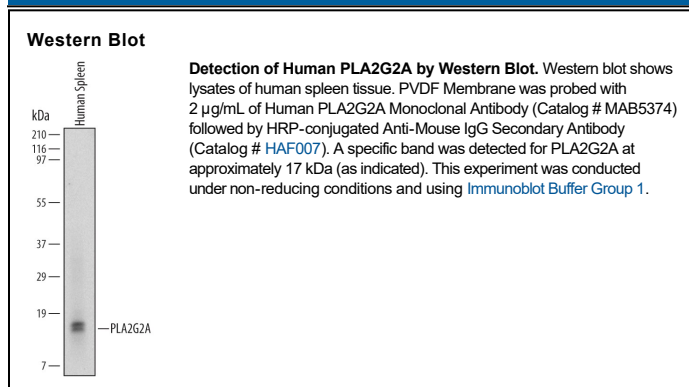
Species Reactivity	Human
Specificity	Detects human PLA2G2A in direct ELISAs and Western blots. In direct ELISAs, no cross-reactivity with recombinant human PLA2G1B, G2A, or G7 is observed.
Source	Monoclonal Mouse IgG _{2B} Clone # 620501
Purification	Protein A or G purified from hybridoma culture supernatant
Immunogen	<i>S. frugiperda</i> insect ovarian cell line Sf 21-derived recombinant human PLA2G2A Asn21-Cys144 Accession # P14555
Formulation	Lyophilized from a 0.2 µm filtered solution in PBS with Trehalose. See Certificate of Analysis for details. *Small pack size (-SP) is supplied either lyophilized or as a 0.2 µm filtered solution in PBS.

APPLICATIONS

Please Note: Optimal dilutions should be determined by each laboratory for each application. [General Protocols](#) are available in the Technical Information section on our website.

	Recommended Concentration	Sample
Western Blot	2 µg/mL	See Below
Immunoprecipitation	25 µg/mL	Conditioned cell culture medium spiked with Recombinant Human PLA2G2A (Catalog # 4925-PL), see our available Western blot detection antibodies

DATA



PREPARATION AND STORAGE

Reconstitution	Reconstitute at 0.5 mg/mL in sterile PBS.
Shipping	The product is shipped at ambient temperature. Upon receipt, store it immediately at the temperature recommended below. *Small pack size (-SP) is shipped with polar packs. Upon receipt, store it immediately at -20 to -70 °C
Stability & Storage	Use a manual defrost freezer and avoid repeated freeze-thaw cycles. <ul style="list-style-type: none"> 12 months from date of receipt, -20 to -70 °C as supplied. 1 month, 2 to 8 °C under sterile conditions after reconstitution. 6 months, -20 to -70 °C under sterile conditions after reconstitution.

BACKGROUND

Phospholipase A2 Group IIA (PLA2G2A) is a 17 kDa member of the phospholipase A2 family of enzymes that hydrolyzes the *sn*-2 ester bond of phospholipids. Human PLA2G2A is synthesized as a 144 amino acid (aa) precursor that contains a 20 aa signal sequence and a 124 aa mature chain. Mature human PLA2G2A shares 72%, 68%, and 60% aa sequence identity with mature rat, mouse, and bovine PLA2G2A, respectively. PLA2G2A is a calcium dependent phospholipase expressed in many cell types associated with inflammation, including platelets, neutrophils, and mast cells. Most secretory PLA2s are stored in cytoplasmic granules and are released into the extracellular environment on appropriate cell activation. Thus, they are present at higher concentrations in the plasma and biologic fluids of patients with systemic inflammatory, autoimmune, or allergic diseases.