

DESCRIPTION

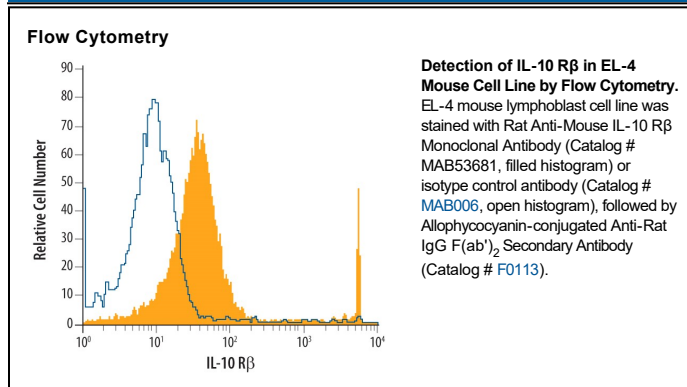
Species Reactivity	Mouse
Specificity	Detects mouse IL-10 R β in direct ELISAs.
Source	Monoclonal Rat IgG _{2A} Clone # 547324
Purification	Protein A or G purified from hybridoma culture supernatant
Immunogen	Mouse myeloma cell line NS0-derived recombinant mouse IL-10 R β Ile21-Ser220 Accession # Q61190
Formulation	Lyophilized from a 0.2 μ m filtered solution in PBS with Trehalose. See Certificate of Analysis for details. *Small pack size (-SP) is supplied either lyophilized or as a 0.2 μ m filtered solution in PBS.

APPLICATIONS

Please Note: Optimal dilutions should be determined by each laboratory for each application. *General Protocols* are available in the *Technical Information* section on our website.

	Recommended Concentration	Sample
Flow Cytometry	2.5 μ g/10 ⁶ cells	See Below
CytoF-ready	Ready to be labeled using established conjugation methods. No BSA or other carrier proteins that could interfere with conjugation.	

DATA



PREPARATION AND STORAGE

Reconstitution	Reconstitute at 0.5 mg/mL in sterile PBS.
Shipping	The product is shipped at ambient temperature. Upon receipt, store it immediately at the temperature recommended below. *Small pack size (-SP) is shipped with polar packs. Upon receipt, store it immediately at -20 to -70 °C
Stability & Storage	Use a manual defrost freezer and avoid repeated freeze-thaw cycles. <ul style="list-style-type: none"> ● 12 months from date of receipt, -20 to -70 °C as supplied. ● 1 month, 2 to 8 °C under sterile conditions after reconstitution. ● 6 months, -20 to -70 °C under sterile conditions after reconstitution.

BACKGROUND

IL-10 R β (Interleukin 10 receptor beta; also IL-10R2, CD210b and CRF2-4) is an 80-85 kDa member of the type II cytokine receptor family of proteins. It is very widely expressed and serves as a signal transducing accessory chain when complexed to the ligand-binding chains for IL-10, -22, -28A, -28B, and -29 (plus IL-26 in human). Mature mouse IL-10 R β is a type I transmembrane protein with an extracellular domain that possesses two fibronectin type III domains (aa 22-107 and 111-208). There is one alternate start site at Met20. Over aa 21- 220, mouse IL-10 R β shares 87% and 74% aa identity with rat and human IL-10 R β , respectively.