

**DESCRIPTION**

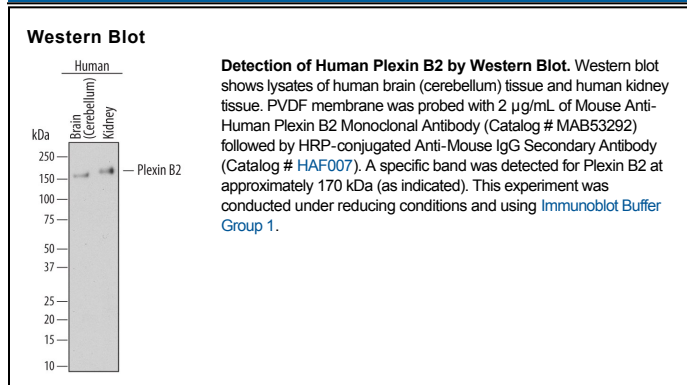
<b>Species Reactivity</b>	Human
<b>Specificity</b>	Detects human Plexin B2 in direct ELISAs. In direct ELISAs, no cross-reactivity with recombinant mouse Plexin B2 or recombinant human Plexin B3 is observed.
<b>Source</b>	Monoclonal Mouse IgG <sub>2A</sub> Clone # 537219
<b>Purification</b>	Protein A or G purified from hybridoma culture supernatant
<b>Immunogen</b>	Chinese hamster ovary cell line CHO-derived recombinant human Plexin B2 Leu20-Arg1160 Accession # O15031
<b>Formulation</b>	Lyophilized from a 0.2 µm filtered solution in PBS with Trehalose. See Certificate of Analysis for details. *Small pack size (-SP) is supplied as a 0.2 µm filtered solution in PBS.

**APPLICATIONS**

**Please Note:** Optimal dilutions should be determined by each laboratory for each application. *General Protocols* are available in the *Technical Information* section on our website.

	<b>Recommended Concentration</b>	<b>Sample</b>
<b>Western Blot</b>	2 µg/mL	See Below

**DATA**



**PREPARATION AND STORAGE**

<b>Reconstitution</b>	Sterile PBS to a final concentration of 0.5 mg/mL.
<b>Shipping</b>	The product is shipped at ambient temperature. Upon receipt, store it immediately at the temperature recommended below. *Small pack size (-SP) is shipped with polar packs. Upon receipt, store it immediately at -20 to -70 °C
<b>Stability &amp; Storage</b>	<b>Use a manual defrost freezer and avoid repeated freeze-thaw cycles.</b> <ul style="list-style-type: none"> <li>● 12 months from date of receipt, -20 to -70 °C as supplied.</li> <li>● 1 month, 2 to 8 °C under sterile conditions after reconstitution.</li> <li>● 6 months, -20 to -70 °C under sterile conditions after reconstitution.</li> </ul>

**BACKGROUND**

Plexin B2 is a 240 kDa member of the B subfamily, plexin family of semaphorin receptors. It is expressed by cerebellar granule cells, neuroepithelium and chondrocytes, and serves as a receptor for Semaphorin 4C. Mature human Plexin B2 is 1819 amino acid (aa) in length. It is a type I transmembrane (TM) glycoprotein that contains an 1178 aa extracellular domain (ECD) plus a 620 aa cytoplasmic region. The ECD contains one semaphorin domain (aa 20-466) and three IPT repeats (aa 803-1092). The ECD may be cleaved into two subunits, a 170 kDa α-chain (aa 20-1164) and an 80 kDa TM β-chain that remain noncovalently-linked. Multiple splice variants may exist. One shows an alternate start site at Met1369, while a second shows a deletion of aa 67-638. Over aa 20-1160, human Plexin B2 is 82% aa identical to mouse Plexin B2.