

**DESCRIPTION**

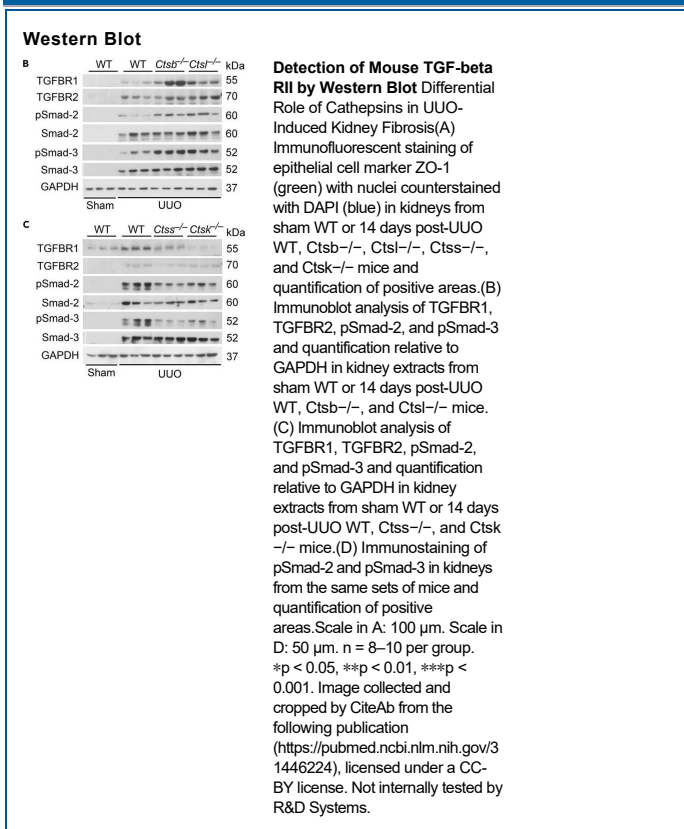
<b>Species Reactivity</b>	Mouse
<b>Specificity</b>	Detects mouse TGF-β RII in direct ELISAs and Western blots. In direct ELISAs, this antibody does not cross-react with recombinant rat MIS RII, recombinant mouse TGF-β RI, recombinant human (rh) TGF-β RII, rhTGF-β RIIb, or rhTGF-β RIII.
<b>Source</b>	Monoclonal Rat IgG <sub>2B</sub> Clone # 129502
<b>Purification</b>	Protein A or G purified from hybridoma culture supernatant
<b>Immunogen</b>	<i>S. frugiperda</i> insect ovarian cell line Sf 21-derived recombinant mouse TGF-β RII Ile24-Asp184 Accession # Q62312
<b>Formulation</b>	Lyophilized from a 0.2 μm filtered solution in PBS with Trehalose.

**APPLICATIONS**

**Please Note:** Optimal dilutions should be determined by each laboratory for each application. General Protocols are available in the Technical Information section on our website.

	<b>Recommended Concentration</b>	<b>Sample</b>
<b>Western Blot</b>	1 μg/mL	Recombinant Mouse TGF-β RII Fc Chimera (Catalog # 1600-R2)

**DATA**



**PREPARATION AND STORAGE**

<b>Reconstitution</b>	Reconstitute at 0.5 mg/mL in sterile PBS.
<b>Shipping</b>	The product is shipped at ambient temperature. Upon receipt, store it immediately at the temperature recommended below.
<b>Stability &amp; Storage</b>	<b>Use a manual defrost freezer and avoid repeated freeze-thaw cycles.</b> <ul style="list-style-type: none"> <li>• 12 months from date of receipt, -20 to -70 °C as supplied.</li> <li>• 1 month, 2 to 8 °C under sterile conditions after reconstitution.</li> <li>• 6 months, -20 to -70 °C under sterile conditions after reconstitution.</li> </ul>

**BACKGROUND**

TGF- $\beta$  RII is a membrane-bound serine/threonine kinase. It associates with TGF- $\beta$  RI to generate a heterodimeric signaling complex that transduces TGF- $\beta$  signals. This receptor binds TGF- $\beta$ 1 and TGF- $\beta$ 3 with high affinity and TGF- $\beta$ 2 with much lower affinity and is expressed by most cell types.