

**DESCRIPTION**

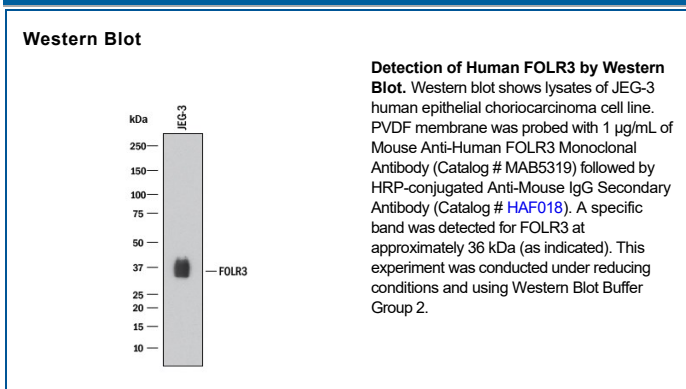
<b>Species Reactivity</b>	Human
<b>Specificity</b>	Detects human FOLR3 in direct ELISAs and Western blots. In direct ELISAs, 10% cross-reactivity with recombinant human (rh) FOLR2 is observed and no cross-reactivity with rhFOLR4 is observed.
<b>Source</b>	Monoclonal Mouse IgG <sub>1</sub> Clone # 553701
<b>Purification</b>	Protein A or G purified from hybridoma culture supernatant
<b>Immunogen</b>	Mouse myeloma cell line NS0-derived recombinant human FOLR3 long isoform Ala22-Ser245 Accession # NP_000795
<b>Formulation</b>	Lyophilized from a 0.2 µm filtered solution in PBS with Trehalose. See Certificate of Analysis for details. *Small pack size (-SP) is supplied either lyophilized or as a 0.2 µm filtered solution in PBS.

**APPLICATIONS**

**Please Note:** Optimal dilutions should be determined by each laboratory for each application. *General Protocols* are available in the *Technical Information* section on our website.

	<b>Recommended Concentration</b>	<b>Sample</b>
<b>Western Blot</b>	1 µg/mL	See Below

**DATA**



**PREPARATION AND STORAGE**

<b>Reconstitution</b>	Reconstitute at 0.5 mg/mL in sterile PBS.
<b>Shipping</b>	The product is shipped at ambient temperature. Upon receipt, store it immediately at the temperature recommended below. *Small pack size (-SP) is shipped with polar packs. Upon receipt, store it immediately at -20 to -70 °C
<b>Stability &amp; Storage</b>	<b>Use a manual defrost freezer and avoid repeated freeze-thaw cycles.</b> <ul style="list-style-type: none"> <li>• 12 months from date of receipt, -20 to -70 °C as supplied.</li> <li>• 1 month, 2 to 8 °C under sterile conditions after reconstitution.</li> <li>• 6 months, -20 to -70 °C under sterile conditions after reconstitution.</li> </ul>

**BACKGROUND**

Folate receptor 3 (FOLR3), also known as folate receptor γ, is a 32 kDa protein that binds folic acid and reduced folates. Dietary folates are required for many key metabolic processes including nucleotide and methionine synthesis, the interconversion of glycine and serine, and histidine breakdown (1). Mature FOLR3 is a glycosylated protein that contains an imperfect carboxy terminal GPI anchor sequence (2, 3). A fraction of FOLR3 is GPI-linked to the cell surface, but the majority is released as a secreted protein (2). Mature human FOLR3 shares 74% and 83% amino acid (aa) sequence identity with FOLR1 and FOLR2, respectively. Orthologs of human FOLR3 have not been described in mouse or rat. A genetic polymorphism generates a truncated isoform that lacks the carboxy terminal 139 aa (2, 4). FOLR3 is expressed by cells of the myelocyte and B lymphocyte lineage as well as by various carcinomas (2, 3). FOLR3 is more highly expressed in ovarian carcinomas than in breast carcinomas or mesotheliomas (5). Unlike other folate receptors, FOLR3 does not exhibit stereoselectivity in the binding of folates (3).

**References:**

1. Fowler, B. *et al.* (2001) *Kidney Int.* **59**:S-221.
2. Shen, F. *et al.* (1994) *Biochemistry* **33**:1209.
3. Shen, F. *et al.* (1995) *Biochemistry* **34**:5660.
4. Wang, H. *et al.* (1998) *Nucl. Acids Res.* **26**:2132.
5. Yuan, Y. *et al.* (2009) *Hum. Pathol.* May 18 epub.