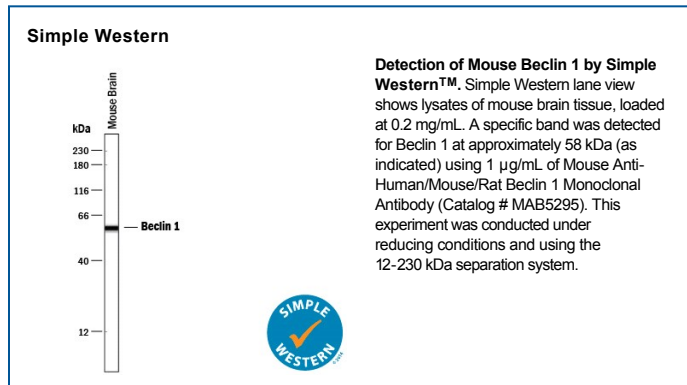
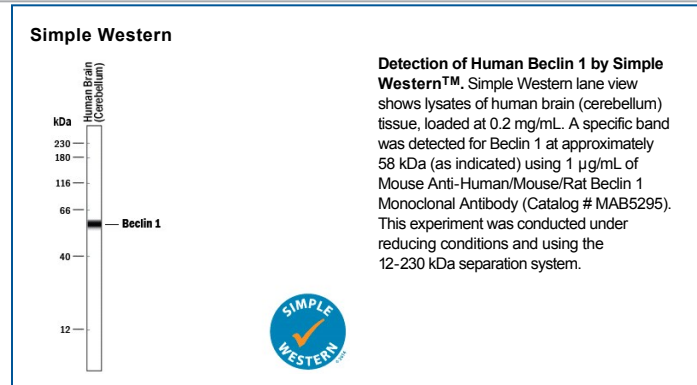
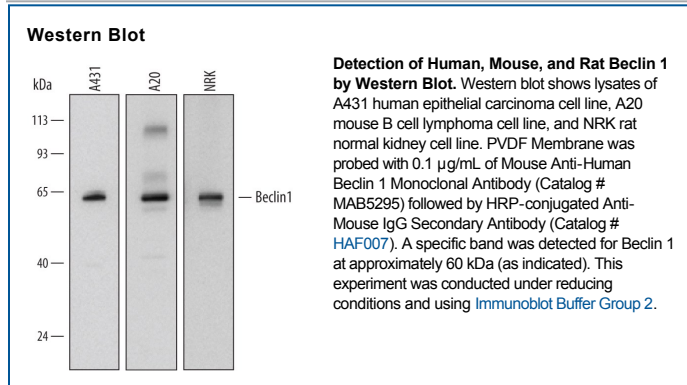


DESCRIPTION	
<b>Species Reactivity</b>	Human/Mouse/Rat
<b>Specificity</b>	Detects human Beclin 1 in direct ELISAs. Detects human, mouse, and rat Beclin 1 in Western blots. In direct ELISAs, no cross-reactivity with recombinant human ATG3, 4A, 4B, 5, 7, 10, 12, or 16L1 is observed.
<b>Source</b>	Monoclonal Mouse IgG <sub>2B</sub> Clone # 669922
<b>Purification</b>	Protein A or G purified from hybridoma culture supernatant
<b>Immunogen</b>	<i>E.coli</i> -derived recombinant human Beclin 1 Met12-Gln239 Accession # Q14457
<b>Formulation</b>	Lyophilized from a 0.2 µm filtered solution in PBS with Trehalose. See Certificate of Analysis for details. *Small pack size (-SP) is supplied as a 0.2 µm filtered solution in PBS.

**APPLICATIONS**  
Please Note: Optimal dilutions should be determined by each laboratory for each application. *General Protocols* are available in the *Technical Information* section on our website.

	Recommended Concentration	Sample
<b>Western Blot</b>	0.1 µg/mL	See Below
<b>Simple Western</b>	1 µg/mL	See Below

**DATA**



**PREPARATION AND STORAGE**

<b>Reconstitution</b>	Sterile PBS to a final concentration of 0.5 mg/mL.
<b>Shipping</b>	The product is shipped at ambient temperature. Upon receipt, store it immediately at the temperature recommended below. *Small pack size (-SP) is shipped with polar packs. Upon receipt, store it immediately at -20 to -70 °C
<b>Stability &amp; Storage</b>	<b>Use a manual defrost freezer and avoid repeated freeze-thaw cycles.</b> <ul style="list-style-type: none"> <li>• 12 months from date of receipt, -20 to -70 °C as supplied.</li> <li>• 1 month, 2 to 8 °C under sterile conditions after reconstitution.</li> <li>• 6 months, -20 to -70 °C under sterile conditions after reconstitution.</li> </ul>

## BACKGROUND

Beclin 1 (Bcl-2 interacting coiled-coil protein; also known as ATG6) is a 60 kDa member of the Beclin family of proteins. It is part of a lipid-kinase complex that includes UVRAG and PI3 and induces autophagy; in the presence of Bcl-2, autophagy is repressed. Beclin 1 is widely expressed but abundantly found in mammary epithelium, glia and neurons. Human Beclin 1 is 450 amino acids (aa) in length and contains a Bcl-2 binding domain (aa 88-150), a nuclear export signal motif (aa 180-189), a coiled-coil region (aa 142-270), and an evolutionary conserved domain (aa 244-337). There is one potential alternate start site at Met88. Over aa 12-239, human Beclin 1 is 98% aa identical to mouse Beclin 1.