

DESCRIPTION

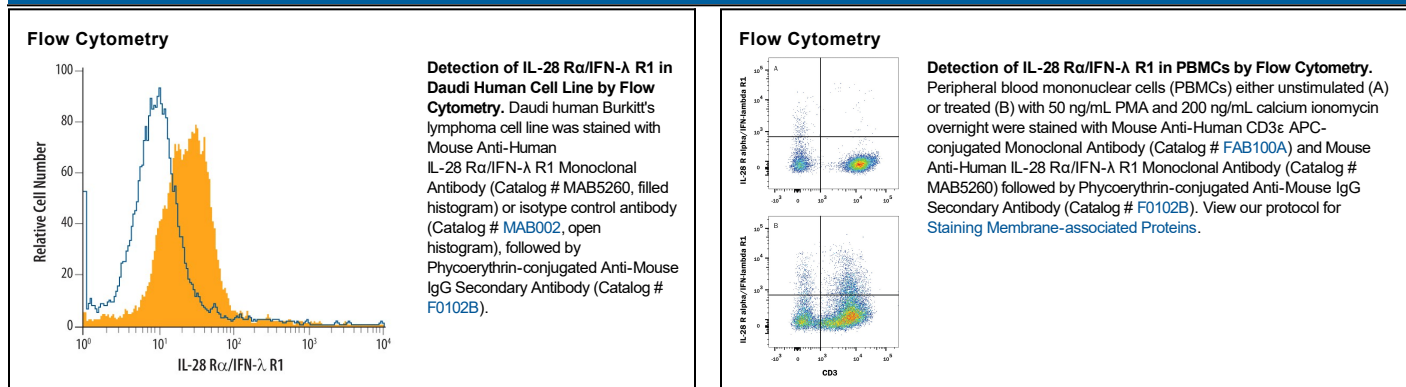
Species Reactivity	Human
Specificity	Detects human IL-28 R α /IFN- λ R1 in direct ELISAs. In direct ELISAs, no cross-reactivity with recombinant mouse IL-28 α is observed.
Source	Monoclonal Mouse IgG ₁ Clone # 601106
Purification	Protein A or G purified from hybridoma culture supernatant
Immunogen	Mouse myeloma cell line NS0-derived recombinant human IL-28 R α /IFN- λ R1 Arg21-Ala228 Accession # Q8IU57
Formulation	Lyophilized from a 0.2 μ m filtered solution in PBS with Trehalose. See Certificate of Analysis for details. *Small pack size (-SP) is supplied either lyophilized or as a 0.2 μ m filtered solution in PBS.

APPLICATIONS

Please Note: Optimal dilutions should be determined by each laboratory for each application. *General Protocols* are available in the *Technical Information* section on our website.

	Recommended Concentration	Sample
Flow Cytometry	0.25 μ g/10 ⁶ cells	See Below
CyTOF-ready	Ready to be labeled using established conjugation methods. No BSA or other carrier proteins that could interfere with conjugation.	

DATA



PREPARATION AND STORAGE

Reconstitution	Sterile PBS to a final concentration of 0.5 mg/mL.
Shipping	The product is shipped at ambient temperature. Upon receipt, store it immediately at the temperature recommended below. *Small pack size (-SP) is shipped with polar packs. Upon receipt, store it immediately at -20 to -70 °C
Stability & Storage	Use a manual defrost freezer and avoid repeated freeze-thaw cycles. <ul style="list-style-type: none"> ● 12 months from date of receipt, -20 to -70 °C as supplied. ● 1 month, 2 to 8 °C under sterile conditions after reconstitution. ● 6 months, -20 to -70 °C under sterile conditions after reconstitution.

BACKGROUND

IL-28 R α (IL-28 receptor alpha subunit; also named interferon- λ R1) is a widely-expressed type I transmembrane glycoprotein that is cytokine receptor family 2 member 12 (CRF2-12). It pairs with the IL-10 receptor β subunit (IL-10 R β , CRF2-4) to form the IL-28 R. Its ligands, IL-28A (IFN- λ 2), IL-28B (IFN- λ 3), and IL-29 (IFN- λ 1), are mainly produced by antigen presenting cells in response to viruses. The 520 amino acid (aa) mouse IL-28 R α contains a 208 aa extracellular domain (ECD) with a fibronectin type III motif. The human IL-28 R α ECD shares ~67% aa identity with rat and human IL-28 R α . Isoforms of 491, 437, 322, 283, 244, 211 and 184 aa have alternate N- or C-termini, or lack transmembrane or internal sequences.