

DESCRIPTION

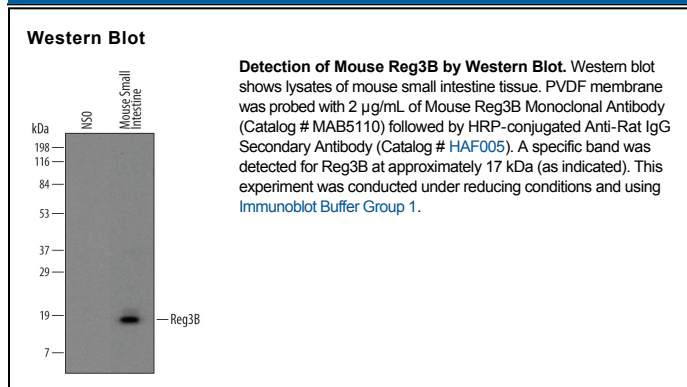
Species Reactivity	Mouse
Specificity	Detects mouse Reg3B in direct ELISAs and Western blots. In direct ELISAs, does not cross-react with recombinant mouse (rm) Reg3A, rmReg3D, recombinant human Reg3D, recombinant rat (rr) Reg3B, or rrReg3G.
Source	Monoclonal Rat IgG _{2B} Clone # 518630
Purification	Protein A or G purified from hybridoma culture supernatant
Immunogen	<i>E. coli</i> -derived recombinant mouse Reg3B Glu27-Gly175 Accession # P35230
Formulation	Lyophilized from a 0.2 µm filtered solution in PBS with Trehalose. See Certificate of Analysis for details. *Small pack size (-SP) is supplied as a 0.2 µm filtered solution in PBS.

APPLICATIONS

Please Note: Optimal dilutions should be determined by each laboratory for each application. *General Protocols* are available in the *Technical Information* section on our website.

	Recommended Concentration	Sample
Western Blot	2 µg/mL	See Below

DATA



PREPARATION AND STORAGE

Reconstitution	Reconstitute at 0.5 mg/mL in sterile PBS.
Shipping	The product is shipped at ambient temperature. Upon receipt, store it immediately at the temperature recommended below. *Small pack size (-SP) is shipped with polar packs. Upon receipt, store it immediately at -20 to -70 °C
Stability & Storage	Use a manual defrost freezer and avoid repeated freeze-thaw cycles. <ul style="list-style-type: none"> ● 12 months from date of receipt, -20 to -70 °C as supplied. ● 1 month, 2 to 8 °C under sterile conditions after reconstitution. ● 6 months, -20 to -70 °C under sterile conditions after reconstitution.

BACKGROUND

Reg3B (regenerating islet-derived protein III beta; also PAP-I and HIP) is a secreted, 17 kDa member of the Reg gene family, C-type lectin gene superfamily. It is found in pancreatic acinar cells, intestinal enterocytes and developing spinal motoneurons. Reg3B may play a role in intestinal epithelial cell renewal. It contains one C-type lectin domain. Mature mouse Reg3B is 91% and 67% aa identical to rat and human Reg3B, respectively.