

DESCRIPTION

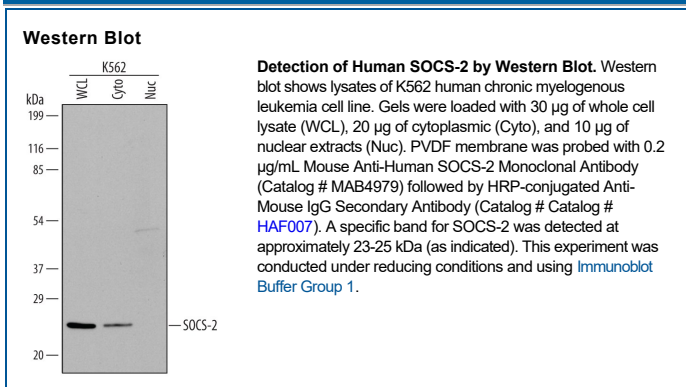
Species Reactivity	Human
Specificity	Detects human SOCS-2 in direct ELISAs and Western blots.
Source	Monoclonal Mouse IgG _{2B} Clone # 517206
Purification	Protein A or G purified from hybridoma culture supernatant
Immunogen	<i>E. coli</i> -derived recombinant human SOCS-2 Met1-Gln197 (predicted) Accession # O14508
Formulation	Lyophilized from a 0.2 µm filtered solution in PBS with Trehalose. See Certificate of Analysis for details. *Small pack size (-SP) is supplied either lyophilized or as a 0.2 µm filtered solution in PBS.

APPLICATIONS

Please Note: Optimal dilutions should be determined by each laboratory for each application. [General Protocols](#) are available in the Technical Information section on our website.

	Recommended Concentration	Sample
Western Blot	0.2 µg/mL	See Below

DATA



PREPARATION AND STORAGE

Reconstitution	Reconstitute at 0.5 mg/mL in sterile PBS.
Shipping	The product is shipped at ambient temperature. Upon receipt, store it immediately at the temperature recommended below. *Small pack size (-SP) is shipped with polar packs. Upon receipt, store it immediately at -20 to -70 °C
Stability & Storage	Use a manual defrost freezer and avoid repeated freeze-thaw cycles. <ul style="list-style-type: none"> 12 months from date of receipt, -20 to -70 °C as supplied. 1 month, 2 to 8 °C under sterile conditions after reconstitution. 6 months, -20 to -70 °C under sterile conditions after reconstitution.

BACKGROUND

SOCS-2 (Suppressor of cytokine signaling 2; also CIS-2 and SSI-2) is a 25 kDa member of the SOCS family of proteins. It is an SH2-domain containing cytoplasmic adaptor protein expressed by multiple cell types. It blocks receptor signaling by binding to phosphorylated tyrosines in the cytoplasmic domain of select receptors, including the receptors for leptin, IGF-I and GH. Human SOCS-2 is 198 amino acids (aa) in length. It contains one SH2 domain (aa 48-156) and a SOCS box (aa 160-198) that mediates interaction with elongin B or C of the E3 ubiquitin ligase complex. There is one splice variant that shows an Arg-rich eight aa substitution for aa 31-39. Full-length SOCS-2 is 94% and 96% aa identical to mouse and porcine SOCS-2, respectively.