

DESCRIPTION

Species Reactivity	Mouse
Specificity	Detects mouse SEZ6L2/BSRP-A in direct ELISAs and Western blots. In direct ELISAs, no cross-reactivity with recombinant mouse (rm) BSRP-B or rmBSRP-C is observed.
Source	Monoclonal Rat IgG _{2A} Clone # 529805
Purification	Protein A or G purified from hybridoma culture supernatant
Immunogen	Mouse myeloma cell line NS0-derived recombinant mouse SEZ6L2/BSRP-A Leu28-Ser837 Accession # Q4V9Z5
Formulation	Lyophilized from a 0.2 µm filtered solution in PBS with Trehalose. See Certificate of Analysis for details. *Small pack size (-SP) is supplied either lyophilized or as a 0.2 µm filtered solution in PBS.

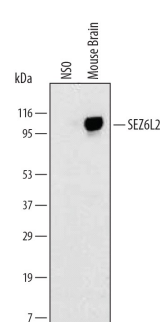
APPLICATIONS

Please Note: Optimal dilutions should be determined by each laboratory for each application. [General Protocols](#) are available in the Technical Information section on our website.

	Recommended Concentration	Sample
Western Blot	2 µg/mL	See Below
Immunohistochemistry	8-25 µg/mL	See Below

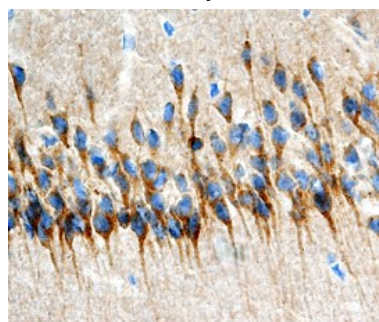
DATA

Western Blot



Detection of Mouse SEZ6L2/BSRP-A by Western Blot. Western blot shows lysates of mouse brain tissue. PVDF membrane was probed with 2 µg/mL of Rat Anti-Mouse SEZ6L2/BSRP-A Monoclonal Antibody (Catalog # MAB4916) followed by HRP-conjugated Anti-Rat IgG Secondary Antibody (Catalog # HAF005). A specific band was detected for SEZ6L2/BSRP-A at approximately 100 kDa (as indicated). This experiment was conducted under reducing conditions and using Immunoblot Buffer Group 1.

Immunohistochemistry



SEZ6L2/BSRP-A in Mouse Brain. SEZ6L2/BSRP-A was detected in perfusion fixed frozen sections of mouse brain (hippocampus) using 25 µg/mL Rat Anti-Mouse SEZ6L2/BSRP-A Monoclonal Antibody (Catalog # MAB4916) overnight at 4 °C. Tissue was stained with the Anti-Rat HRP-DAB Cell & Tissue Staining Kit (brown; Catalog # CTS017) and counterstained with hematoxylin (blue). View our protocol for [Chromogenic IHC Staining of Frozen Tissue Sections](#).

PREPARATION AND STORAGE

Reconstitution	Reconstitute at 0.5 mg/mL in sterile PBS.
Shipping	The product is shipped at ambient temperature. Upon receipt, store it immediately at the temperature recommended below. *Small pack size (-SP) is shipped with polar packs. Upon receipt, store it immediately at -20 to -70 °C
Stability & Storage	Use a manual defrost freezer and avoid repeated freeze-thaw cycles. <ul style="list-style-type: none"> 12 months from date of receipt, -20 to -70 °C as supplied. 1 month, 2 to 8 °C under sterile conditions after reconstitution. 6 months, -20 to -70 °C under sterile conditions after reconstitution.

BACKGROUND

BSRP-A (Brain-specific receptor-like protein A; also known as SEZ6L2) is a 170 kDa member of the BSRP family of proteins. It is expressed in the plasma membrane and ER of CNS neurons, and likely regulates PKCα activation. Mature mouse BSRP-A is an 890 amino acid (aa) type I transmembrane protein. It contains an 824 aa extracellular domain (ECD) (aa 21-844) and a 43 aa cytoplasmic tail. The ECD shows two CUB domains and five short consensus repeats (SCRs). There are multiple isoforms for BSRP-A. One shows a premature truncation after Arg403, a second shows a deletion of aa 71-130, and a third likely represents the full-length form that contains a 13 aa insertion after Val830. Over aa 28-837, mouse BSRP-A shares 96% and 99% aa sequence identity with human and rat BSRP-A, respectively.