

DESCRIPTION

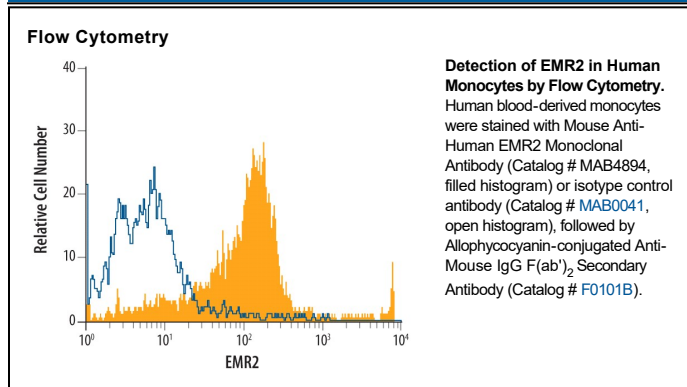
Species Reactivity	Human
Specificity	Detects human EMR2 in EMR2-transfected cells but not in the parental cell line.
Source	Monoclonal Mouse IgG _{2B} Clone # 494025
Purification	Protein A or G purified from hybridoma culture supernatant
Immunogen	NS0 mouse myeloma cell line transfected with human EMR2 Gln24-Asn823 Accession # AAI27006
Formulation	Lyophilized from a 0.2 µm filtered solution in PBS with Trehalose. See Certificate of Analysis for details. *Small pack size (-SP) is supplied either lyophilized or as a 0.2 µm filtered solution in PBS.

APPLICATIONS

Please Note: Optimal dilutions should be determined by each laboratory for each application. *General Protocols* are available in the *Technical Information* section on our website.

	Recommended Concentration	Sample
Flow Cytometry	0.25 µg/10 ⁶ cells	See Below
CyTOF-ready	Ready to be labeled using established conjugation methods. No BSA or other carrier proteins that could interfere with conjugation.	

DATA



PREPARATION AND STORAGE

Reconstitution	Reconstitute at 0.5 mg/mL in sterile PBS.
Shipping	The product is shipped at ambient temperature. Upon receipt, store it immediately at the temperature recommended below. *Small pack size (-SP) is shipped with polar packs. Upon receipt, store it immediately at -20 to -70 °C
Stability & Storage	Use a manual defrost freezer and avoid repeated freeze-thaw cycles. <ul style="list-style-type: none"> ● 12 months from date of receipt, -20 to -70 °C as supplied. ● 1 month, 2 to 8 °C under sterile conditions after reconstitution. ● 6 months, -20 to -70 °C under sterile conditions after reconstitution.

BACKGROUND

EMR2 (EGF-like module-containing mucin-like receptor 2; designated CD312) is a glycoprotein belonging to the EGF-TM7 family of adhesion-type class B 7-transmembrane (TM) receptors. EGF-like sequences within long extracellular N-termini, and a GPS (G-protein proteolytic site) domain are characteristic of this family, which is mainly expressed on cells of the immune system (1, 2). The human EMR2 cDNA encodes an 823 amino acid (aa) protein with five EGF-like domains within the first 250 aa, followed by a mucin-like stalk, a GPS domain (aa 479-530) and a 7-TM sequence (aa 531-785). The GPS domain is the site of autocatalytic cleavage, forming two cleaved portions that remain non-covalently attached as a heterodimer (1, 3). Of the first 290 aa of human EMR2, 284 aa (97%) are identical with family member CD97, likely due to gene duplication (2). The portion of human EMR2 N-terminal to the GPS domain (aa 1-478) shares 64%, 59%, 48% and 45% aa identity with corresponding regions of canine EMR2, equine EMR2, mouse CD97 and rat CD97, respectively. Alternate splicing of EMR2 creates isoforms that contain 2-5 EGF-like domains. Only the 5-EGF form contains EGF4, which is necessary for calcium-dependent binding of the EMR2/CD97 ligand, chondroitin sulfate (CS) (2, 4-6). None of the isoforms engage the CD97 ligand, CD55 (DAF). EMR2 is restricted to myeloid cells (1, 2). EMR2 expression increases as monocytes differentiate into macrophages, and decreases with differentiation into dendritic cells (5). Activation increases neutrophil EMR2 expression (5). EMR2 localizes to the leading edge of migrating neutrophils and plays an important role in migration, adhesion and superoxide production (7). It is also thought to facilitate specific interaction of myeloid cells with peripheral B lymphocytes which express CS (6).

References:

1. Kwakkenbos, M.J. *et al.* (2004) *Immunogenetics* **55**:655.
2. Lin, H.-H. *et al.* (2000) *Genomics* **67**:188.
3. Lin, H.-H. *et al.* (2004) *J. Biol. Chem.* **279**:31823.
4. Stacey, M. *et al.* (2003) *Blood* **102**:2916.
5. Chang G.-W. *et al.* (2007) *Biochem. Biophys. Res. Commun.* **353**:133.
6. Kwakkenbos, M.J. *et al.* (2005) *J. Leukoc. Biol.* **77**:112.
7. Yona, S. *et al.* (2008) *FASEB J.* **22**:741.