

DESCRIPTION

Species Reactivity	Human
Specificity	Detects mouse GluR1 in direct ELISA.
Source	Monoclonal Mouse IgG _{2B} Clone # 1059503
Purification	Protein A or G purified from hybridoma culture supernatant
Immunogen	Synthetic peptide Accession # P42261
Formulation	Lyophilized from a 0.2 µm filtered solution in PBS with Trehalose. See Certificate of Analysis for details. *Small pack size (-SP) is supplied either lyophilized or as a 0.2 µm filtered solution in PBS.

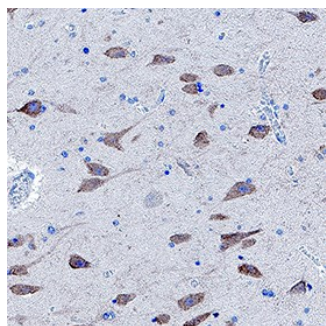
APPLICATIONS

Please Note: Optimal dilutions should be determined by each laboratory for each application. [General Protocols](#) are available in the [Technical Information](#) section on our website.

	Recommended Concentration	Sample
Immunohistochemistry	5-25 µg/mL	Immersion fixed paraffin-embedded sections of Human Hippocampus

DATA

Immunohistochemistry



Detection of mGluR1 in Human Hippocampus. mGluR1 was detected in immersion fixed paraffin-embedded sections of Human Hippocampus using Mouse Anti-Human mGluR1 Monoclonal Antibody (Catalog # MAB48362) at 5 µg/mL for 1 hour at room temperature followed by incubation with the Anti-Mouse IgG VisUCyte™ HRP Polymer Antibody (Catalog # VC001). Before incubation with the primary antibody, tissue was subjected to heat-induced epitope retrieval using VisUCyte Antigen Retrieval Reagent-Basic (Catalog # VCTS021). Tissue was stained using DAB (brown) and counterstained with hematoxylin (blue). Specific staining was localized to plasma membrane and cytoplasm in neurons. View our protocol for [IHC Staining with VisUCyte HRP Polymer Detection Reagents](#).

PREPARATION AND STORAGE

Reconstitution	Reconstitute at 0.5 mg/mL in sterile PBS.
Shipping	The product is shipped at ambient temperature. Upon receipt, store it immediately at the temperature recommended below. *Small pack size (-SP) is shipped with polar packs. Upon receipt, store it immediately at -20 to -70 °C
Stability & Storage	Use a manual defrost freezer and avoid repeated freeze-thaw cycles. <ul style="list-style-type: none"> • 12 months from date of receipt, -20 to -70 °C as supplied. • 1 month, 2 to 8 °C under sterile conditions after reconstitution. • 6 months, -20 to -70 °C under sterile conditions after reconstitution.

BACKGROUND

GluR1 is a 4-transmembrane protein that belongs to the glutamate-gated ion channel family. It is one of four AMPA receptor subunits that form a functional heterotetrameric glutamate receptor. GluR1 only interacts with GluR2. In addition to constitutive phosphorylation on a key serine in the C-terminal extracellular region, neurotransmitter-induced phosphorylation of another key serine by CaMKII leads to a potentiation of glutamate-mediated current.