

**DESCRIPTION**

<b>Species Reactivity</b>	Mouse
<b>Specificity</b>	Detects mouse IL-1ra/IL-1F3 in direct ELISAs.
<b>Source</b>	Monoclonal Rat IgG <sub>1</sub> Clone # 962802
<b>Purification</b>	Protein A or G purified from hybridoma culture supernatant
<b>Immunogen</b>	<i>E. coli</i> -derived recombinant mouse IL-1ra/IL-1F3 Arg27-Gln178 Accession # P258085
<b>Formulation</b>	Lyophilized from a 0.2 µm filtered solution in PBS with Trehalose. See Certificate of Analysis for details. *Small pack size (-SP) is supplied as a 0.2 µm filtered solution in PBS.

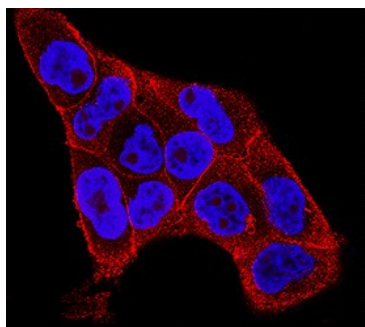
**APPLICATIONS**

**Please Note:** Optimal dilutions should be determined by each laboratory for each application. *General Protocols* are available in the *Technical Information* section on our website.

	<b>Recommended Concentration</b>	<b>Sample</b>
<b>Immunocytochemistry</b>	3-25 µg/mL	See Below

**DATA**

**Immunocytochemistry**



**IL-1ra/IL-1F3 in A431 Human Cell Line.** IL-1ra/IL-1F3 was detected in immersion fixed A431 human epithelial carcinoma cell line using Rat Anti-Mouse IL-1ra/IL-1F3 Monoclonal Antibody (Catalog # MAB4802) at 3 µg/mL for 3 hours at room temperature. Cells were stained using the NorthernLights™ 557-conjugated Anti-Rat IgG Secondary Antibody (red; Catalog # NL013) and counterstained with DAPI (blue). Specific staining was localized to cytoplasm. View our protocol for [Fluorescent ICC Staining of Cells on Coverslips](#).

**PREPARATION AND STORAGE**

<b>Reconstitution</b>	Reconstitute at 0.5 mg/mL in sterile PBS.
<b>Shipping</b>	The product is shipped at ambient temperature. Upon receipt, store it immediately at the temperature recommended below. *Small pack size (-SP) is shipped with polar packs. Upon receipt, store it immediately at -20 to -70 °C
<b>Stability &amp; Storage</b>	<b>Use a manual defrost freezer and avoid repeated freeze-thaw cycles.</b> <ul style="list-style-type: none"> <li>● 12 months from date of receipt, -20 to -70 °C as supplied.</li> <li>● 1 month, 2 to 8 °C under sterile conditions after reconstitution.</li> <li>● 6 months, -20 to -70 °C under sterile conditions after reconstitution.</li> </ul>

**BACKGROUND**

IL-1ra was originally isolated from the urine of patients with monocytic leukemia and has also been purified from adherent monocytes. The naturally-occurring, fully glycosylated form has an apparent molecular weight of about 25 kDa. The protein shows 26% amino acid homology to IL-1β and 19% homology to IL-1α. It will compete with either factor for receptor binding, but does not interact with either one. Human IL-1ra will bind to both types of IL-1 receptor (I and II) on human cells. In mouse, IL-1 RII does not bind IL-1ra. The recombinant, non-glycosylated form of IL-1ra blocks binding of IL-1 to its receptor equally as well as the naturally-occurring, glycosylated form. The IL-1ra has been shown to block the inflammatory responses induced by IL-1 both *in vitro* and *in vivo*. Pre-clinical and clinical studies were done to test possible therapeutic applications for IL-1ra in the treatment of sepsis, rheumatoid arthritis and chronic myelogenous leukemia.