

DESCRIPTION

Species Reactivity	Mouse
Specificity	Detects mouse PGLYRP2/PGRP-L in direct ELISAs and Western blots. In Western blots, no cross-reactivity with recombinant mouse (rm) PGRP-S and rmPGRP-1 β is observed.
Source	Monoclonal Rat IgG _{2A} Clone # 439728
Purification	Protein A or G purified from hybridoma culture supernatant
Immunogen	Mouse myeloma cell line NS0-derived recombinant mouse PGLYRP2/PGRP-L Ser23-Asn530 Accession # Q8VCS0
Formulation	Lyophilized from a 0.2 μ m filtered solution in PBS with Trehalose. See Certificate of Analysis for details. *Small pack size (-SP) is supplied either lyophilized or as a 0.2 μ m filtered solution in PBS.

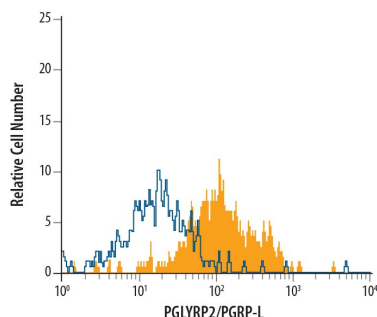
APPLICATIONS

Please Note: Optimal dilutions should be determined by each laboratory for each application. [General Protocols](#) are available in the Technical Information section on our website.

	Recommended Concentration	Sample
Western Blot	1 μ g/mL	Recombinant Mouse PGLYRP2/PGRP-L
Intracellular Staining by Flow Cytometry	0.25 μ g/10 ⁶ cells	See Below
CyTOF-ready	Ready to be labeled using established conjugation methods. No BSA or other carrier proteins that could interfere with conjugation.	

DATA

Intracellular Staining by Flow Cytometry



Detection of PGLYRP2/PGRP-L in Mouse Liver Cells by Flow Cytometry. Mouse liver single-cell suspension was stained with Rat Anti-Mouse PGLYRP2/PGRP-L Monoclonal Antibody (Catalog # MAB4704, filled histogram) or isotype control antibody (Catalog # MAB006, open histogram), followed by Allophycocyanin-conjugated Anti-Rat IgG F(ab')₂ Secondary Antibody (Catalog # F0113). To facilitate intracellular staining, cells were fixed with paraformaldehyde and permeabilized with saponin.

PREPARATION AND STORAGE

Reconstitution	Reconstitute at 0.5 mg/mL in sterile PBS.
Shipping	The product is shipped at ambient temperature. Upon receipt, store it immediately at the temperature recommended below. *Small pack size (-SP) is shipped with polar packs. Upon receipt, store it immediately at -20 to -70 °C
Stability & Storage	Use a manual defrost freezer and avoid repeated freeze-thaw cycles. <ul style="list-style-type: none"> 12 months from date of receipt, -20 to -70 °C as supplied. 1 month, 2 to 8 °C under sterile conditions after reconstitution. 6 months, -20 to -70 °C under sterile conditions after reconstitution.

BACKGROUND

PGRP-L (peptidoglycan recognition protein-long; also called PGRP-2 or TagL) is a 530 amino acid (aa) member of the PGRP family that is expressed in the liver. All mouse PGRPs bind peptidoglycan and Gram-positive bacteria, and may function as innate immunity pattern recognition molecules. PGRP-L is a Zn²⁺-dependent N-acetylmuramoyl-L-alanine amidase that hydrolyzes cell wall glycopeptides. It contains two membrane-spanning segments, with both termini thought to be extracellular, but is also reported in serum. A truncated 450 aa isoform has been reported. Overall aa identity between mouse and human PGRP-L is 68%.