

DESCRIPTION

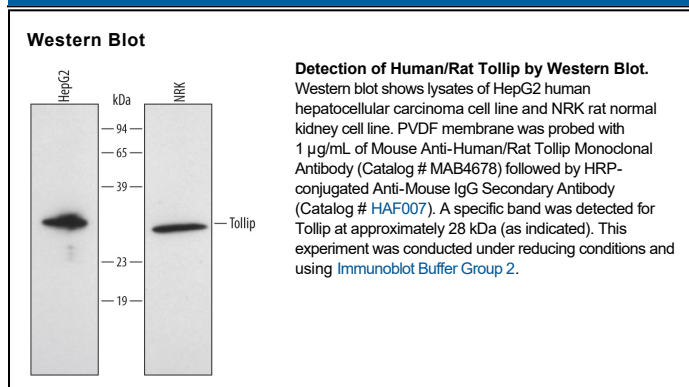
Species Reactivity	Human/Rat
Specificity	Detects human and rat Tollip in Western blots.
Source	Monoclonal Mouse IgG _{2A} Clone # 503315
Purification	Protein A or G purified from hybridoma culture supernatant
Immunogen	<i>E. coli</i> -derived recombinant human Tollip Met1-Pro274 Accession # Q9H0E2
Formulation	Lyophilized from a 0.2 µm filtered solution in PBS with Trehalose. See Certificate of Analysis for details. *Small pack size (-SP) is supplied either lyophilized or as a 0.2 µm filtered solution in PBS.

APPLICATIONS

Please Note: Optimal dilutions should be determined by each laboratory for each application. [General Protocols](#) are available in the Technical Information section on our website.

	Recommended Concentration	Sample
Western Blot	1 µg/mL	See Below

DATA



PREPARATION AND STORAGE

Reconstitution	Reconstitute at 0.5 mg/mL in sterile PBS.
Shipping	The product is shipped at ambient temperature. Upon receipt, store it immediately at the temperature recommended below. *Small pack size (-SP) is shipped with polar packs. Upon receipt, store it immediately at -20 to -70 °C
Stability & Storage	Use a manual defrost freezer and avoid repeated freeze-thaw cycles. <ul style="list-style-type: none"> • 12 months from date of receipt, -20 to -70 °C as supplied. • 1 month, 2 to 8 °C under sterile conditions after reconstitution. • 6 months, -20 to -70 °C under sterile conditions after reconstitution.

BACKGROUND

Tollip (Toll-interacting protein) is a 28 kDa, cytoplasmic protein that is involved in IL-1 and Toll receptor signaling. It is classified as an adaptor protein that performs multiple functions. It binds both IRAK and Toll receptors, inhibiting constitutive IL-1 and Toll receptor signaling. It also binds to ubiquitinated IL-1 RI, directing it to the endosomal degradation compartment. Human Tollip is 274 amino acids(aa) in length. It contains a C2 Ca⁺⁺-binding region (aa 54-154) and a CUE domain (aa 229-270) that binds ubiquitin. One potential splice form exists that shows a deletion of aa 6-33. Human Tollip is 92% identical to mouse Tollip.