

DESCRIPTION

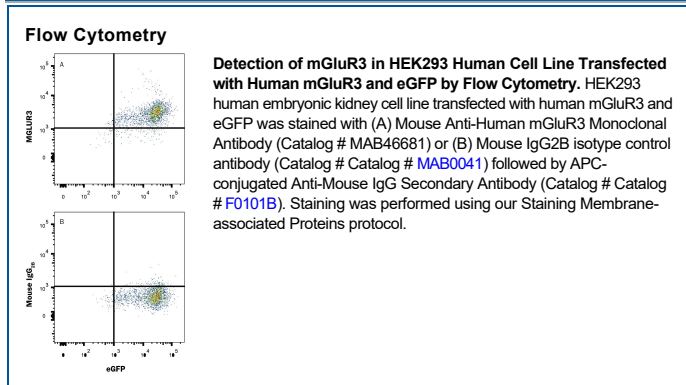
Species Reactivity	Human
Specificity	Detects human mGluR3 in direct ELISAs.
Source	Monoclonal Mouse IgG _{2B} Clone # 530510
Purification	Protein A or G purified from hybridoma culture supernatant
Immunogen	Chinese hamster ovary cell line CHO-derived recombinant human mGluR3 Asp25-Ser507 Accession # Q14832
Formulation	Lyophilized from a 0.2 µm filtered solution in PBS with Trehalose. See Certificate of Analysis for details. *Small pack size (-SP) is supplied either lyophilized or as a 0.2 µm filtered solution in PBS.

APPLICATIONS

Please Note: Optimal dilutions should be determined by each laboratory for each application. *General Protocols* are available in the *Technical Information* section on our website.

	Recommended Concentration	Sample
Flow Cytometry	0.25 µg/10 ⁶ cells	See Below
CyTOF-ready	Ready to be labeled using established conjugation methods. No BSA or other carrier proteins that could interfere with conjugation.	

DATA



PREPARATION AND STORAGE

Reconstitution	Reconstitute at 0.5 mg/mL in sterile PBS.
Shipping	The product is shipped at ambient temperature. Upon receipt, store it immediately at the temperature recommended below. *Small pack size (-SP) is shipped with polar packs. Upon receipt, store it immediately at -20 to -70 °C
Stability & Storage	Use a manual defrost freezer and avoid repeated freeze-thaw cycles. <ul style="list-style-type: none"> • 12 months from date of receipt, -20 to -70 °C as supplied. • 1 month, 2 to 8 °C under sterile conditions after reconstitution. • 6 months, -20 to -70 °C under sterile conditions after reconstitution.

BACKGROUND

Metabotropic glutamate receptor 3 (mGluR3) is a 90-100 kDa, 7-transmembrane glycoprotein that belongs to group II of the C-family of G-protein coupled receptors. It is a presynaptic receptor expressed on both neurons and glia, whose activation reduces adenylate cyclase activity. Mature human mGluR3 is 857 amino acids in length and contains a 554 amino acid (aa) N-terminal extracellular domain (ECD) (aa 23-576). The ECD binds glutamate and forms homodimers. There is one alternative splice form that is soluble, 515 aa in length and shows a 96 aa substitution for aa 442-879. Over aa 25-507, human mGluR3 shares 97% aa sequence identity with mouse and rat mGluR3 and 67% aa sequence identity with hGluR2.