

DESCRIPTION

Species Reactivity	Human
Specificity	Detects human NAALADase-like 2/NAALADL2 in ELISAs.
Source	Monoclonal Mouse IgG _{2B} Clone # 817227
Purification	Protein A or G purified from hybridoma culture supernatant
Immunogen	Mouse myeloma cell line NS0-derived recombinant human NAALADase-like 2/NAALADL2 Ser152-Asn795 Accession # Q58DX5
Formulation	Lyophilized from a 0.2 µm filtered solution in PBS with Trehalose. See Certificate of Analysis for details. *Small pack size (-SP) is supplied either lyophilized or as a 0.2 µm filtered solution in PBS.

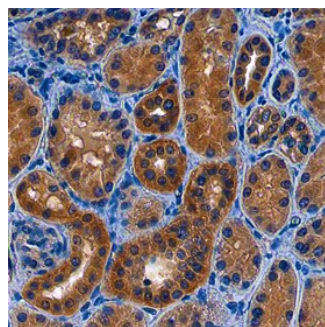
APPLICATIONS

Please Note: Optimal dilutions should be determined by each laboratory for each application. [General Protocols](#) are available in the Technical Information section on our website.

	Recommended Concentration	Sample
Immunohistochemistry	8-25 µg/mL	See Below

DATA

Immunohistochemistry



NAALADase-like 2/NAALADL2 in Human Kidney. NAALADase-like 2/NAALADL2 was detected in immersion fixed paraffin-embedded sections of human kidney using Mouse Anti-Human NAALADase-like 2/NAALADL2 Monoclonal Antibody (Catalog # MAB46651) at 15 µg/mL overnight at 4 °C. Before incubation with the primary antibody, tissue was subjected to heat-induced epitope retrieval using Antigen Retrieval Reagent-Basic (Catalog # CTS013). Tissue was stained using the Anti-Mouse HRP-DAB Cell & Tissue Staining Kit (brown; Catalog # CTS002) and counterstained with hematoxylin (blue). Specific staining was localized to cytoplasm of epithelial cells in convoluted tubules. View our protocol for [Chromogenic IHC Staining of Paraffin-embedded Tissue Sections](#).

PREPARATION AND STORAGE

Reconstitution	Sterile PBS to a final concentration of 0.5 mg/mL.
Shipping	The product is shipped at ambient temperature. Upon receipt, store it immediately at the temperature recommended below. *Small pack size (-SP) is shipped with polar packs. Upon receipt, store it immediately at -20 to -70 °C
Stability & Storage	Use a manual defrost freezer and avoid repeated freeze-thaw cycles. <ul style="list-style-type: none"> 12 months from date of receipt, -20 to -70 °C as supplied. 1 month, 2 to 8 °C under sterile conditions after reconstitution. 6 months, -20 to -70 °C under sterile conditions after reconstitution.

BACKGROUND

NAALADL2 (N-acetylated α-linked acidic dipeptidase like 2) is a member of the peptidase M28 family of enzymes. It is presumably a type II transmembrane (TM) protein that may have O-glycosyl hydrolase activity. Human NAALADL2 is 795 amino acids (aa) in length. It is believed to contain a cytoplasmic and TM segment at the N-terminus, followed by a peptidase domain (aa 444-596) and a TfR-like dimerization region (aa 688-777). There are multiple splice forms. One shows a 4 aa substitution for aa 292-795, a second shows an alternate start site at Met18 with a 24 aa substitution for aa 314-795, and a third contains an alternate start site at Met283, accompanied by a deletion of aa 363-411 and 633-795. Over aa 152-795, human NAALADL2 shares 87% and 82% aa sequence identity with mouse and canine NAALADL2, respectively.