

DESCRIPTION

Species Reactivity	Human
Specificity	Detects human Aminopeptidase O/ONPEP in direct ELISAs.
Source	Monoclonal Mouse IgG ₁ Clone # 562912
Purification	Protein A or G purified from hybridoma culture supernatant
Immunogen	<i>S. frugiperda</i> insect ovarian cell line Sf 21-derived recombinant human Aminopeptidase O/ONPEP Met1-Phe819 Accession # Q8N6M6
Formulation	Lyophilized from a 0.2 µm filtered solution in PBS with Trehalose. See Certificate of Analysis for details. *Small pack size (-SP) is supplied either lyophilized or as a 0.2 µm filtered solution in PBS.

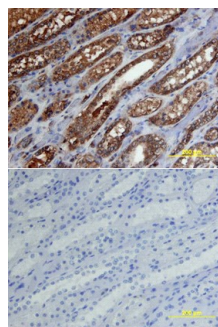
APPLICATIONS

Please Note: Optimal dilutions should be determined by each laboratory for each application. [General Protocols](#) are available in the Technical Information section on our website.

	Recommended Concentration	Sample
Immunohistochemistry	8-25 µg/mL	See Below

DATA

Immunohistochemistry



Aminopeptidase O/ONPEP in Human Kidney.

Aminopeptidase O/ONPEP was detected in immersion fixed paraffin-embedded sections of human kidney array using Human Aminopeptidase O/ONPEP Monoclonal Antibody (Catalog # MAB4647) at 15 µg/mL overnight at 4 °C. Tissue was stained using the Anti-Mouse HRP-DAB Cell & Tissue Staining Kit (brown; Catalog # CTS002) and counterstained with hematoxylin (blue). Lower panel shows a lack of labeling if primary antibodies are omitted and tissue is stained only with secondary antibody followed by incubation with detection reagents. View our protocol for [Chromogenic IHC Staining of Paraffin-embedded Tissue Sections](#).

PREPARATION AND STORAGE

Reconstitution	Reconstitute at 0.5 mg/mL in sterile PBS.
Shipping	The product is shipped at ambient temperature. Upon receipt, store it immediately at the temperature recommended below. *Small pack size (-SP) is shipped with polar packs. Upon receipt, store it immediately at -20 to -70 °C
Stability & Storage	Use a manual defrost freezer and avoid repeated freeze-thaw cycles. <ul style="list-style-type: none"> 12 months from date of receipt, -20 to -70 °C as supplied. 1 month, 2 to 8 °C under sterile conditions after reconstitution. 6 months, -20 to -70 °C under sterile conditions after reconstitution.

BACKGROUND

Aminopeptidase O (AP-O; also C9orf3) is a 93 kDa (predicted), intracellular member of the M1 metalloprotease family of enzymes. It is expressed in heart, testis and pancreas where it apparently cleaves N terminal Arg and Asn residues. Human Aminopeptidase O is 819 amino acids in length. It contains one catalytic domain (aa 167-589) with a Zn-binding site (His479-His483) and a C terminal ARM region (aa 706-819). At least three additional isoforms exist. One shows a deletion of aa 455-553; a second has an 11 aa substitution for the C terminal 265 amino acids; and a third shows both a deletion of aa 455-553 and an 11 aa substitution for the C-terminal 46 amino acids. Full length human Aminopeptidase O is 76% aa identical to mouse Aminopeptidase O.