

**DESCRIPTION**

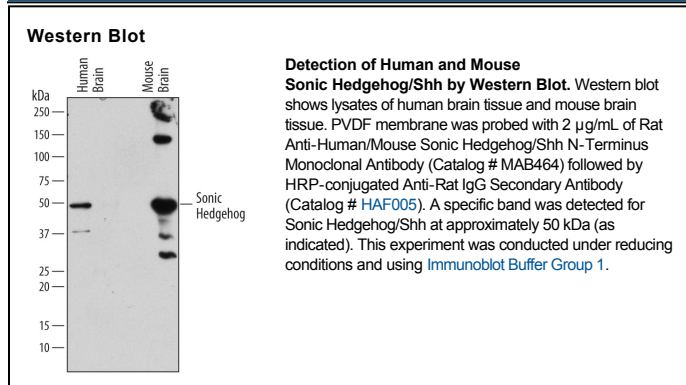
<b>Species Reactivity</b>	Human/Mouse
<b>Specificity</b>	Detects the N-terminal peptide of human (amino acids 24-197) and mouse (amino acids 25-198) Shh in direct ELISAs and Western blots. Shows 50-100% cross-reactivity with the N-terminal peptides of recombinant mouse (rm) Dhh (amino acids 23-198) and rmlhh (amino acids 66-240) and no cross-reactivity with the C-terminal peptides from rmShh (amino acids 199-437), rmDhh (amino acids 199-396), or rmlhh (amino acids 241-449).
<b>Source</b>	Monoclonal Rat IgG <sub>2A</sub> Clone # 171001
<b>Purification</b>	Protein A or G purified from hybridoma culture supernatant
<b>Immunogen</b>	<i>E. coli</i> -derived recombinant mouse Sonic Hedgehog Cys25-Gly198 (Lys122Arg) Accession # Q62226
<b>Formulation</b>	Lyophilized from a 0.2 µm filtered solution in PBS with Trehalose. See Certificate of Analysis for details. *Small pack size (-SP) is supplied as a 0.2 µm filtered solution in PBS.

**APPLICATIONS**

**Please Note:** Optimal dilutions should be determined by each laboratory for each application. *General Protocols* are available in the *Technical Information* section on our website.

	<b>Recommended Concentration</b>	<b>Sample</b>
<b>Western Blot</b>	2 µg/mL	See Below

**DATA**



**PREPARATION AND STORAGE**

<b>Reconstitution</b>	Reconstitute at 0.5 mg/mL in sterile PBS.
<b>Shipping</b>	The product is shipped at ambient temperature. Upon receipt, store it immediately at the temperature recommended below. *Small pack size (-SP) is shipped with polar packs. Upon receipt, store it immediately at -20 to -70 °C
<b>Stability &amp; Storage</b>	<b>Use a manual defrost freezer and avoid repeated freeze-thaw cycles.</b> <ul style="list-style-type: none"> <li>● 12 months from date of receipt, -20 to -70 °C as supplied.</li> <li>● 1 month, 2 to 8 °C under sterile conditions after reconstitution.</li> <li>● 6 months, -20 to -70 °C under sterile conditions after reconstitution.</li> </ul>