

DESCRIPTION

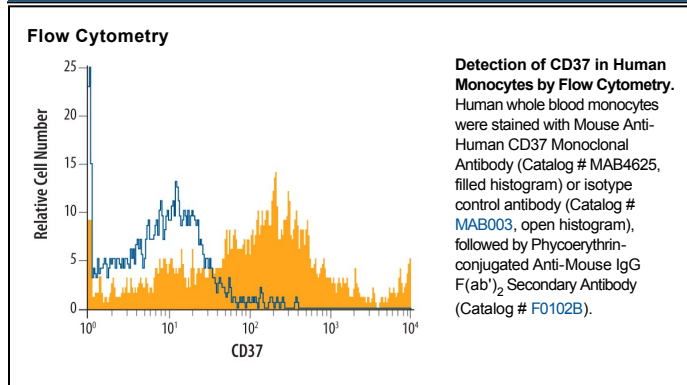
Species Reactivity	Human
Specificity	Detects human CD37. Stains human CD37 transfectants but not irrelevant transfectants.
Source	Monoclonal Mouse IgG _{2A} Clone # 424925
Purification	Protein A or G purified from hybridoma culture supernatant
Immunogen	Mouse myeloma cell line NS0-derived recombinant human CD37 Accession # Q96LM7
Formulation	Lyophilized from a 0.2 µm filtered solution in PBS with Trehalose. See Certificate of Analysis for details. *Small pack size (-SP) is supplied as a 0.2 µm filtered solution in PBS.

APPLICATIONS

Please Note: Optimal dilutions should be determined by each laboratory for each application. *General Protocols* are available in the *Technical Information* section on our website.

	Recommended Concentration	Sample
Flow Cytometry	0.25 µg/10 ⁶ cells	See Below
CytoF-ready	Ready to be labeled using established conjugation methods. No BSA or other carrier proteins that could interfere with conjugation.	

DATA



PREPARATION AND STORAGE

Reconstitution	Reconstitute at 0.5 mg/mL in sterile PBS.
Shipping	The product is shipped at ambient temperature. Upon receipt, store it immediately at the temperature recommended below. *Small pack size (-SP) is shipped with polar packs. Upon receipt, store it immediately at -20 to -70 °C
Stability & Storage	Use a manual defrost freezer and avoid repeated freeze-thaw cycles. <ul style="list-style-type: none"> ● 12 months from date of receipt, -20 to -70 °C as supplied. ● 1 month, 2 to 8 °C under sterile conditions after reconstitution. ● 6 months, -20 to -70 °C under sterile conditions after reconstitution.

BACKGROUND

CD37, also known as TSPAN26, is a 40-45 kDa palmitoylated tetraspanin superfamily glycoprotein that is expressed by lymphocytes and myeloid cells. CD37 directly associates with dectin-1 on macrophages and stabilizes cell surface dectin-1 expression. It also inhibits T cell activation and proliferation by limiting T cell receptor signaling. Human CD37 shares 80% aa sequence identity with mouse and rat CD37.