

DESCRIPTION

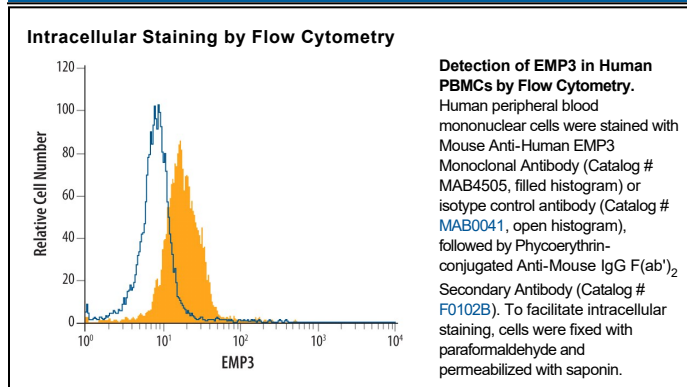
Species Reactivity	Human
Specificity	Detects human EMP. Stains human EMP3 cell transfectants but not irrelevant transfectants.
Source	Monoclonal Mouse IgG _{2B} Clone # 439949
Purification	Protein A or G purified from hybridoma culture supernatant
Immunogen	NS0 mouse myeloma cell line transfected with human EMP3 Met1-Glu163 Accession # P54852
Formulation	Lyophilized from a 0.2 µm filtered solution in PBS with Trehalose. See Certificate of Analysis for details. *Small pack size (-SP) is supplied either lyophilized or as a 0.2 µm filtered solution in PBS.

APPLICATIONS

Please Note: Optimal dilutions should be determined by each laboratory for each application. *General Protocols* are available in the *Technical Information* section on our website.

	Recommended Concentration	Sample
Intracellular Staining by Flow Cytometry	0.25 µg/10 ⁶ cells	See Below
CyTOF-ready	Ready to be labeled using established conjugation methods. No BSA or other carrier proteins that could interfere with conjugation.	

DATA



PREPARATION AND STORAGE

Reconstitution	Reconstitute at 0.5 mg/mL in sterile PBS.
Shipping	The product is shipped at ambient temperature. Upon receipt, store it immediately at the temperature recommended below. *Small pack size (-SP) is shipped with polar packs. Upon receipt, store it immediately at -20 to -70 °C
Stability & Storage	Use a manual defrost freezer and avoid repeated freeze-thaw cycles. <ul style="list-style-type: none"> ● 12 months from date of receipt, -20 to -70 °C as supplied. ● 1 month, 2 to 8 °C under sterile conditions after reconstitution. ● 6 months, -20 to -70 °C under sterile conditions after reconstitution.

BACKGROUND

Epithelial membrane protein 3 (EMP3) is a multipass transmembrane protein in the peripheral myelin protein 22 family. It is expressed as a 20-25 kDa molecule depending on the degree of glycosylation. EMP3 interacts with the P2X7 purinergic receptor on monocytes. Its dysregulation is associated with glioma and neuroblastoma. Human EMP3 shares 93% aa sequence identity with mouse and rat EMP3.