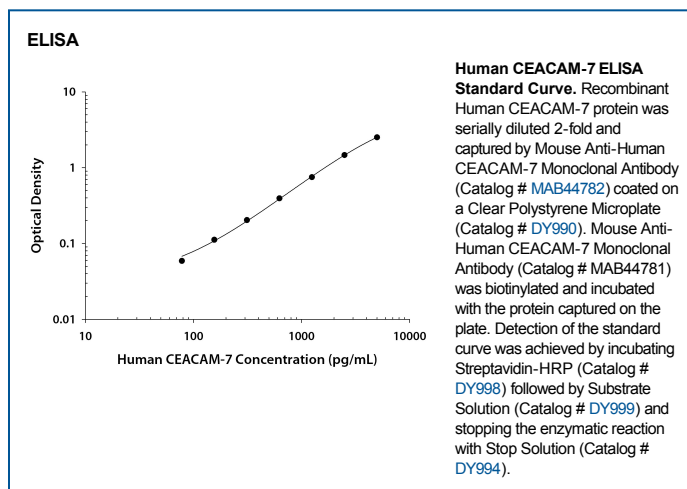
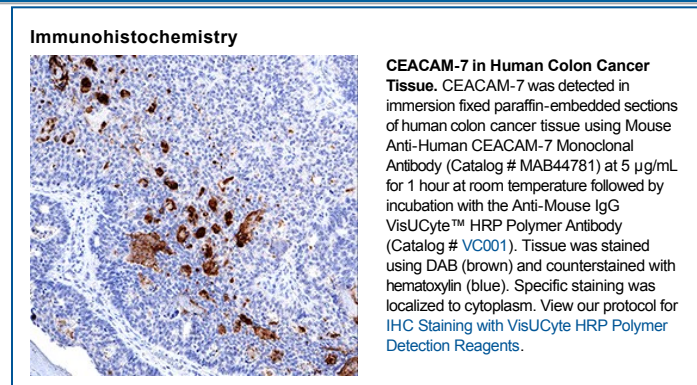
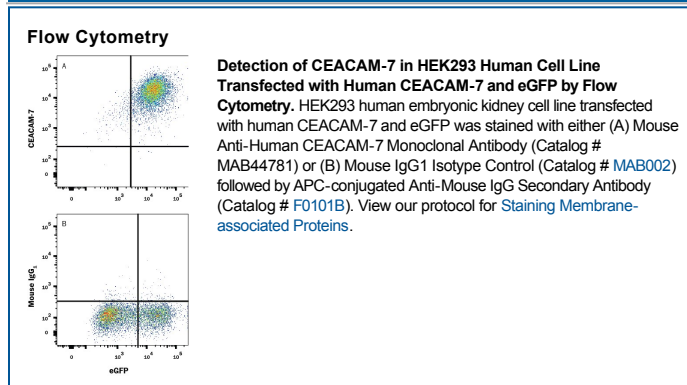


DESCRIPTION	
<b>Species Reactivity</b>	Human
<b>Specificity</b>	Detects human CEACAM-7 in direct ELISAs.
<b>Source</b>	Monoclonal Mouse IgG <sub>1</sub> Clone # 962703
<b>Purification</b>	Protein A or G purified from hybridoma culture supernatant
<b>Immunogen</b>	Chinese Hamster Ovary cell line, CHO-derived recombinant human CEACAM-7 Thr36-Asn233 Accession # Q14002
<b>Formulation</b>	Lyophilized from a 0.2 µm filtered solution in PBS with Trehalose. See Certificate of Analysis for details. *Small pack size (-SP) is supplied either lyophilized or as a 0.2 µm filtered solution in PBS.

APPLICATIONS		
<b>Please Note:</b> Optimal dilutions should be determined by each laboratory for each application. <i>General Protocols</i> are available in the <i>Technical Information</i> section on our website.		
	<b>Recommended Concentration</b>	<b>Sample</b>
<b>Flow Cytometry</b>	0.25 µg/10 <sup>6</sup> cells	See Below
<b>Immunohistochemistry</b>	5-25 µg/mL	See Below
<b>CyTOF-ready</b>	Ready to be labeled using established conjugation methods. No BSA or other carrier proteins that could interfere with conjugation.	
<b>ELISA</b>	This antibody functions as an ELISA detection antibody when paired with Mouse Anti-Human CEACAM-7 Monoclonal Antibody (Catalog # <a href="#">MAB44782</a> ).	
	<i>This product is intended for assay development on various assay platforms requiring antibody pairs. We recommend the Human CEACAM-7 DuoSet ELISA Kit (Catalog # <a href="#">DY4478-05</a>) for convenient development of a sandwich ELISA.</i>	

## DATA



**PREPARATION AND STORAGE**

**Reconstitution** Reconstitute at 0.5 mg/mL in sterile PBS.

**Shipping** The product is shipped at ambient temperature. Upon receipt, store it immediately at the temperature recommended below.  
\*Small pack size (-SP) is shipped with polar packs. Upon receipt, store it immediately at -20 to -70 °C

**Stability & Storage** Use a manual defrost freezer and avoid repeated freeze-thaw cycles.

- 12 months from date of receipt, -20 to -70 °C as supplied.
- 1 month, 2 to 8 °C under sterile conditions after reconstitution.
- 6 months, -20 to -70 °C under sterile conditions after reconstitution.

**BACKGROUND**

Carcinoembryonic antigen-related cell adhesion molecule 7 (CEACAM-7), also known as CGM2, is an approximately 40 kDa GPI-anchored glycoprotein in the CEACAM family of adhesion molecules (1). Mature human CEACAM-7 consists of two Ig-like domains followed by the GPI anchor (2). Alternative splicing generates a short isoform that lacks the second Ig-like domain. CEACAM-7 is preferentially expressed on the luminal surface of epithelial cells near the mouth of colonic crypts and on pancreatic ductal epithelial cells (3, 4). It is down-regulated during colorectal adenoma progression (2-6) but can be up-regulated during the development of gastric carcinoma (7). R&D Systems in-house testing indicates that CEACAM-7 binds to CEACAM-1, consistent with the heterophilic interaction of CEACAM-1 with other CEACAM family members (1, 8, 9).

**References:**

1. Tchoupa, A.K. *et al.* (2014) Cell Commun. Signal. **12**:27.
2. Thompson, J. *et al.* (1994) J. Biol. Chem. **269**:32924.
3. Thompson, J. *et al.* (1997) Cancer Res. **57**:1776.
4. Scholzel, S. *et al.* (2000) Am. J. Pathol. **156**:595.
5. Nollau, P. *et al.* (1997) Cancer Res. **57**:2354.
6. Nollau, P. *et al.* (1997) Am. J. Pathol. **151**:521.
7. Zhou, J. *et al.* (2011) World J. Surgical Oncol. **9**:172.
8. Markel, G. *et al.* (2004) J. Immunol. **173**:3732.
9. Oikawa, S. *et al.* (1992) Biochem. Biophys. Res. Commun. **186**:881.