

DESCRIPTION

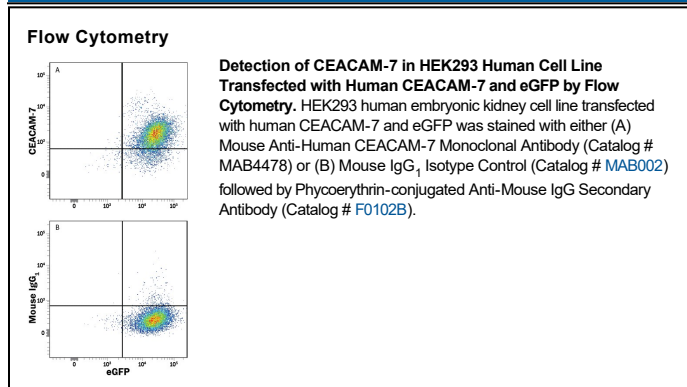
Species Reactivity	Human
Specificity	Detects human CEACAM-7 in direct ELISAs. Stains human CEACAM-7 transfected cells but not irrelevant transfectants.
Source	Monoclonal Mouse IgG ₁ Clone # 934660
Purification	Protein A or G purified from hybridoma culture supernatant
Immunogen	<i>E. coli</i> -derived recombinant human CEACAM-7 Asn37-Phe142 Accession # Q14002
Formulation	Lyophilized from a 0.2 µm filtered solution in PBS with Trehalose. See Certificate of Analysis for details. *Small pack size (-SP) is supplied either lyophilized or as a 0.2 µm filtered solution in PBS.

APPLICATIONS

Please Note: Optimal dilutions should be determined by each laboratory for each application. *General Protocols* are available in the *Technical Information* section on our website.

	Recommended Concentration	Sample
Flow Cytometry	0.25 µg/10 ⁶ cells	See Below
CyTOF-ready	Ready to be labeled using established conjugation methods. No BSA or other carrier proteins that could interfere with conjugation.	

DATA



PREPARATION AND STORAGE

Reconstitution	Reconstitute at 0.5 mg/mL in sterile PBS.
Shipping	The product is shipped at ambient temperature. Upon receipt, store it immediately at the temperature recommended below. *Small pack size (-SP) is shipped with polar packs. Upon receipt, store it immediately at -20 to -70 °C
Stability & Storage	Use a manual defrost freezer and avoid repeated freeze-thaw cycles. <ul style="list-style-type: none"> ● 12 months from date of receipt, -20 to -70 °C as supplied. ● 1 month, 2 to 8 °C under sterile conditions after reconstitution. ● 6 months, -20 to -70 °C under sterile conditions after reconstitution.

BACKGROUND

CEACAM-7 (carcinoembryonic antigen cell adhesion molecule 7; also CGM2) is a 40-45 kDa member of the CEACAM subfamily of the CEA family of proteins. It has a restricted expression pattern, being found on epithelium of the colon, appendix and pancreatic ducts. It is markedly down-regulated in colon carcinoma. Mature human CEACAM-7 is a 209 amino acid (aa), GPI-linked glycoprotein. It contains one V-type (aa 36-142) and one C2-type (aa 146-233) Ig-like domain, plus a 21 aa C-terminal propeptide. One alternate splice form exists that shows a deletion of aa 143-235.