

**DESCRIPTION**

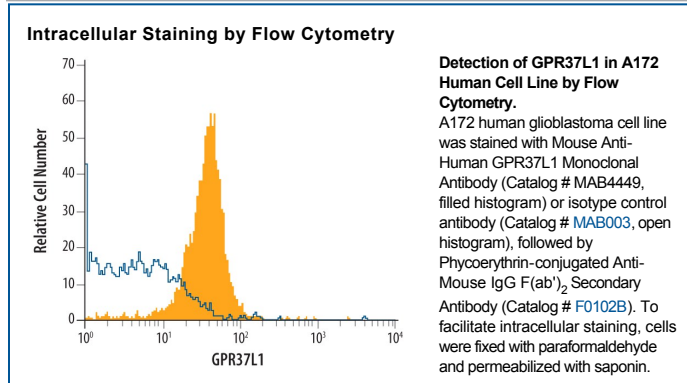
<b>Species Reactivity</b>	Human
<b>Specificity</b>	Detects human GPR37L1. Stains human GPR37L1 transfectants but not irrelevant transfectants.
<b>Source</b>	Monoclonal Mouse IgG <sub>2A</sub> Clone # 444532
<b>Purification</b>	Protein A or G purified from hybridoma culture supernatant
<b>Immunogen</b>	NS0 mouse myeloma cell line transfected with human GPR37L1 Accession # O60883
<b>Formulation</b>	Lyophilized from a 0.2 µm filtered solution in PBS with Trehalose. See Certificate of Analysis for details. *Small pack size (-SP) is supplied as a 0.2 µm filtered solution in PBS.

**APPLICATIONS**

**Please Note:** Optimal dilutions should be determined by each laboratory for each application. *General Protocols* are available in the *Technical Information* section on our website.

	<b>Recommended Concentration</b>	<b>Sample</b>
<b>Intracellular Staining by Flow Cytometry</b>	0.25 µg/10 <sup>6</sup> cells	See Below
<b>CyTOF-ready</b>	Ready to be labeled using established conjugation methods. No BSA or other carrier proteins that could interfere with conjugation.	

**DATA**



**PREPARATION AND STORAGE**

<b>Reconstitution</b>	Reconstitute at 0.5 mg/mL in sterile PBS.
<b>Shipping</b>	The product is shipped at ambient temperature. Upon receipt, store it immediately at the temperature recommended below. *Small pack size (-SP) is shipped with polar packs. Upon receipt, store it immediately at -20 to -70 °C
<b>Stability &amp; Storage</b>	<b>Use a manual defrost freezer and avoid repeated freeze-thaw cycles.</b> <ul style="list-style-type: none"> <li>● 12 months from date of receipt, -20 to -70 °C as supplied.</li> <li>● 1 month, 2 to 8 °C under sterile conditions after reconstitution.</li> <li>● 6 months, -20 to -70 °C under sterile conditions after reconstitution.</li> </ul>

**BACKGROUND**

GPR37L1 (G-protein coupled receptor 37-like 1), also called ETBR-LP-2 (endothelin B receptor-like protein 2), is a 481 aa, orphan 7-transmembrane receptor with calculated molecular weight of 53 kDa. GPR37L1 is expressed in cerebellar Bergmann glia, cerebral cortex and internal capsule fibers in the central nervous system. It shows 39% aa identity with GPR37, a neuronal protein that accumulates in juvenile Parkinson's disease neurons under endoplasmic reticulum stress. GPR37L1 does not bind known endothelin B family members. The extracellular portions of human and mouse GPR37L1 share 85% aa identity.