

DESCRIPTION

| | |
|---------------------------|---|
| Species Reactivity | Human |
| Specificity | Detects human TCF-3/E2A in direct ELISAs. In this format, 100% cross-reactivity with recombinant human (rh) TCF-12 is observed and no cross-reactivity with rhTCF-1, 2, 4, 7L1, 7L2 or rhLEF-1 is observed. |
| Source | Monoclonal Rat IgG _{2B} Clone # 401709 |
| Purification | Protein A or G purified from hybridoma culture supernatant |
| Immunogen | <i>E. coli</i> -derived recombinant human TCF-3/E2A Gly100-Glu500 Accession # NP_003191 |
| Formulation | Lyophilized from a 0.2 µm filtered solution in PBS with Trehalose. See Certificate of Analysis for details. *Small pack size (-SP) is supplied as a 0.2 µm filtered solution in PBS. |

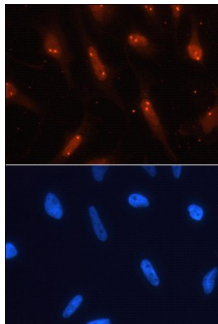
APPLICATIONS

Please Note: Optimal dilutions should be determined by each laboratory for each application. *General Protocols* are available in the *Technical Information* section on our website.

| | Recommended Concentration | Sample |
|----------------------------|----------------------------------|---------------|
| Immunocytochemistry | 8-25 µg/mL | See Below |

DATA

Immunocytochemistry



TCF-3/E2A in HeLa Human Cell Line. TCF-3/E2A was detected in immersion fixed HeLa human cervical epithelial carcinoma cell line using Human TCF-3/E2A Monoclonal Antibody (Catalog # MAB44061) at 10 µg/mL for 3 hours at room temperature. Cells were stained using the NorthernLights™ 557-conjugated Anti-Rat IgG Secondary Antibody (red; Catalog # NL013) and counterstained with DAPI (blue). Specific staining was localized to nucleoli. View our protocol for [Fluorescent ICC Staining of Cells on Coverslips](#).

PREPARATION AND STORAGE

| | |
|--------------------------------|--|
| Reconstitution | Sterile PBS to a final concentration of 0.5 mg/mL. |
| Shipping | The product is shipped at ambient temperature. Upon receipt, store it immediately at the temperature recommended below. *Small pack size (-SP) is shipped with polar packs. Upon receipt, store it immediately at -20 to -70 °C |
| Stability & Storage | Use a manual defrost freezer and avoid repeated freeze-thaw cycles. <ul style="list-style-type: none"> ● 12 months from date of receipt, -20 to -70 °C as supplied. ● 1 month, 2 to 8 °C under sterile conditions after reconstitution. ● 6 months, -20 to -70 °C under sterile conditions after reconstitution. |

BACKGROUND

TCF-3, also known as E2A and ITF-1, is a member of the E protein homeobox family. TCF-3 regulates checkpoints that allow B lineage commitment and B and T cell receptor gene rearrangement. Two isoforms named E12 and E47 are alternatively spliced within the DNA binding and HLH domain. The region of human TCF-3 used as the immunogen, which is identical for E12 and E47, shares 80% and 79% aa identity with mouse and rat TCF-3, respectively.