

DESCRIPTION

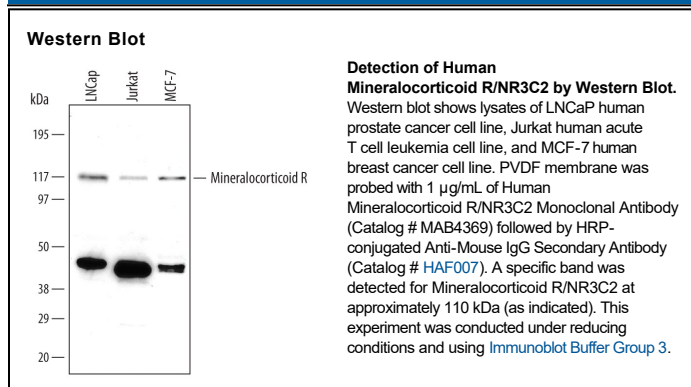
Species Reactivity	Human
Specificity	Detects human Mineralocorticoid R/NR3C2.
Source	Monoclonal Mouse IgG _{2B} Clone # 385707
Purification	Protein A or G purified from hybridoma culture supernatant
Immunogen	<i>E. coli</i> -derived recombinant human Mineralocorticoid R/NR3C2 Met1-Leu670 Accession # AAI11759
Formulation	Lyophilized from a 0.2 µm filtered solution in PBS with Trehalose. See Certificate of Analysis for details. *Small pack size (-SP) is supplied either lyophilized or as a 0.2 µm filtered solution in PBS.

APPLICATIONS

Please Note: Optimal dilutions should be determined by each laboratory for each application. [General Protocols](#) are available in the Technical Information section on our website.

	Recommended Concentration	Sample
Western Blot	1 µg/mL	See Below
Immunohistochemistry	8-25 µg/mL	Immersion fixed paraffin-embedded sections of human prostate cancer tissue subjected to Antigen Retrieval Reagent-Basic (Catalog # CTS013)

DATA



PREPARATION AND STORAGE

Reconstitution	Reconstitute at 0.5 mg/mL in sterile PBS.
Shipping	The product is shipped at ambient temperature. Upon receipt, store it immediately at the temperature recommended below. *Small pack size (-SP) is shipped with polar packs. Upon receipt, store it immediately at -20 to -70 °C
Stability & Storage	Use a manual defrost freezer and avoid repeated freeze-thaw cycles. <ul style="list-style-type: none"> 12 months from date of receipt, -20 to -70 °C as supplied. 1 month, 2 to 8 °C under sterile conditions after reconstitution. 6 months, -20 to -70 °C under sterile conditions after reconstitution.

BACKGROUND

Mineralocorticoid Receptor (MR) is a member of the nuclear hormone receptor family. Upon binding of ligand (aldosterone or corticosterone) MR translocates to the nucleus and can form either homo or heterodimers. MR dimers bind to the mineralocorticoid response element (AGAACANNNTGTTCT) to regulate gene transcription. There are four known isoforms of MR.