

**DESCRIPTION**

<b>Species Reactivity</b>	Human
<b>Specificity</b>	Detects human PINK1 in direct ELISAs.
<b>Source</b>	Monoclonal Rat IgG <sub>2A</sub> Clone # 420920
<b>Purification</b>	Protein A or G purified from hybridoma culture supernatant
<b>Immunogen</b>	<i>E. coli</i> -derived recombinant human PINK1 Met1-Leu581 Accession # ABM87645
<b>Formulation</b>	Lyophilized from a 0.2 µm filtered solution in PBS with Trehalose. See Certificate of Analysis for details. *Small pack size (-SP) is supplied either lyophilized or as a 0.2 µm filtered solution in PBS.

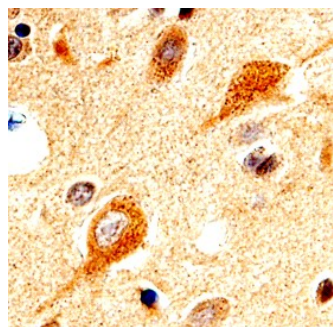
**APPLICATIONS**

Please Note: Optimal dilutions should be determined by each laboratory for each application. General Protocols are available in the Technical Information section on our website.

	<b>Recommended Concentration</b>	<b>Sample</b>
<b>Immunohistochemistry</b>	8-25 µg/mL	See Below

**DATA**

**Immunohistochemistry**



**PINK1 in Human Brain.** PINK1 was detected in immersion fixed paraffin-embedded sections of human brain (cortex) using 15 µg/mL Rat Anti-Human PINK1 Monoclonal Antibody (Catalog # MAB4357) overnight at 4 °C. Before incubation with the primary antibody tissue was subjected to heat-induced epitope retrieval using Antigen Retrieval Reagent-Basic (Catalog # CTS013). Tissue was stained with the Anti-Rat HRP-DAB Cell & Tissue Staining Kit (brown; Catalog # CTS017) and counterstained with hematoxylin (blue). View our protocol for [Chromogenic IHC Staining of Paraffin-embedded Tissue Sections](#).

**PREPARATION AND STORAGE**

<b>Reconstitution</b>	Reconstitute at 0.5 mg/mL in sterile PBS.
<b>Shipping</b>	The product is shipped at ambient temperature. Upon receipt, store it immediately at the temperature recommended below. *Small pack size (-SP) is shipped with polar packs. Upon receipt, store it immediately at -20 to -70 °C
<b>Stability &amp; Storage</b>	<b>Use a manual defrost freezer and avoid repeated freeze-thaw cycles.</b> <ul style="list-style-type: none"> <li>● 12 months from date of receipt, -20 to -70 °C as supplied.</li> <li>● 1 month, 2 to 8 °C under sterile conditions after reconstitution.</li> <li>● 6 months, -20 to -70 °C under sterile conditions after reconstitution.</li> </ul>

**BACKGROUND**

PTEN-induced putative kinase 1 (PINK1) is a ubiquitous protein with highest levels in heart, skeletal muscle, and testis, and with lower expression in other tissues, including brain. PINK1 contains a mitochondrial targeting motif and a highly conserved protein kinase domain with strong homology to serine/threonine kinases of the calcium/calmodulin family. Mutations in the *Pink1* gene have been identified as a cause of autosomal recessive early-onset parkinsonism.