

DESCRIPTION

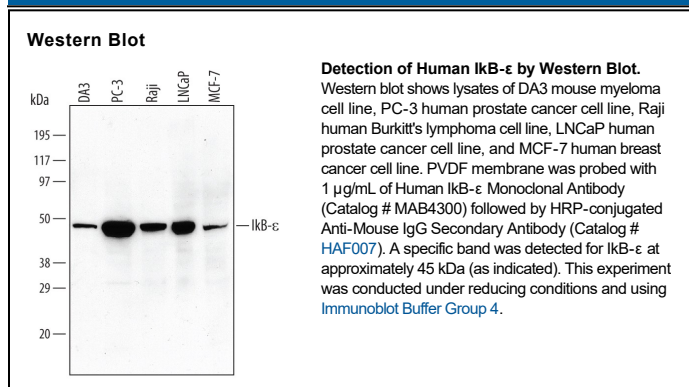
Species Reactivity	Human
Specificity	Detects endogenous human and mouse IκB-ε in Western blots.
Source	Monoclonal Mouse IgG _{2B} Clone # 418515
Purification	Protein A or G purified from hybridoma culture supernatant
Immunogen	<i>E. coli</i> -derived recombinant human IκB-ε Ser64-Asp423 Accession # Q96F31
Formulation	Lyophilized from a 0.2 μm filtered solution in PBS with Trehalose. See Certificate of Analysis for details. *Small pack size (-SP) is supplied either lyophilized or as a 0.2 μm filtered solution in PBS.

APPLICATIONS

Please Note: Optimal dilutions should be determined by each laboratory for each application. [General Protocols](#) are available in the Technical Information section on our website.

	Recommended Concentration	Sample
Western Blot	1 μg/mL	See Below

DATA



PREPARATION AND STORAGE

Reconstitution	Reconstitute at 0.5 mg/mL in sterile PBS.
Shipping	The product is shipped at ambient temperature. Upon receipt, store it immediately at the temperature recommended below. *Small pack size (-SP) is shipped with polar packs. Upon receipt, store it immediately at -20 to -70 °C
Stability & Storage	Use a manual defrost freezer and avoid repeated freeze-thaw cycles. <ul style="list-style-type: none"> ● 12 months from date of receipt, -20 to -70 °C as supplied. ● 1 month, 2 to 8 °C under sterile conditions after reconstitution. ● 6 months, -20 to -70 °C under sterile conditions after reconstitution.

BACKGROUND

NFκB inhibitor epsilon (IκBε) inhibits the NFκB complex by binding and sequestering it in the cytoplasm. Upon stimulation, IκBε is phosphorylated on serine residues marking it for degradation by the ubiquitin pathway. Following IκBε degradation, the NFκB complex is able to translocate to the nucleus and activate transcription.