

DESCRIPTION

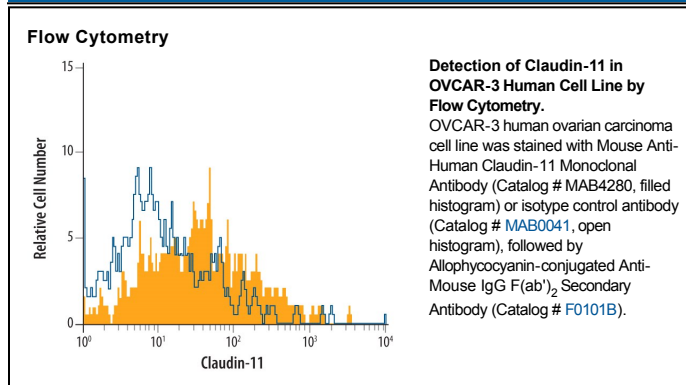
Species Reactivity	Human
Specificity	Detects human Claudin-11 in direct ELISAs and Western blots. Stains human Claudin-11 transfectants but not irrelevant transfectants.
Source	Monoclonal Mouse IgG _{2B} Clone # 398205
Purification	Protein A or G purified from hybridoma culture supernatant
Immunogen	NS0 mouse myeloma cell line transfected with human Claudin-11 Met1-Val207 Accession # O75508
Formulation	Lyophilized from a 0.2 µm filtered solution in PBS with Trehalose. See Certificate of Analysis for details. *Small pack size (-SP) is supplied as a 0.2 µm filtered solution in PBS.

APPLICATIONS

Please Note: Optimal dilutions should be determined by each laboratory for each application. *General Protocols* are available in the *Technical Information* section on our website.

	Recommended Concentration	Sample
Flow Cytometry	2.5 µg/10 ⁶ cells	See Below
CyTOF-ready	Ready to be labeled using established conjugation methods. No BSA or other carrier proteins that could interfere with conjugation.	

DATA



PREPARATION AND STORAGE

Reconstitution	Reconstitute at 0.5 mg/mL in sterile PBS.
Shipping	The product is shipped at ambient temperature. Upon receipt, store it immediately at the temperature recommended below. *Small pack size (-SP) is shipped with polar packs. Upon receipt, store it immediately at -20 to -70 °C
Stability & Storage	Use a manual defrost freezer and avoid repeated freeze-thaw cycles. <ul style="list-style-type: none"> ● 12 months from date of receipt, -20 to -70 °C as supplied. ● 1 month, 2 to 8 °C under sterile conditions after reconstitution. ● 6 months, -20 to -70 °C under sterile conditions after reconstitution.

BACKGROUND

Claudin-11 is a 207 amino acid multipass membrane protein in the claudin family of epithelial tight junction proteins. Claudin-11 is widely expressed and is involved in epithelial remodeling during spermatogenesis and inner ear mechanotransduction. Claudin-11 is up-regulated in some cancers. Human Claudin-11 shares 94% aa sequence identity with mouse and rat Claudin-11.