

## DESCRIPTION

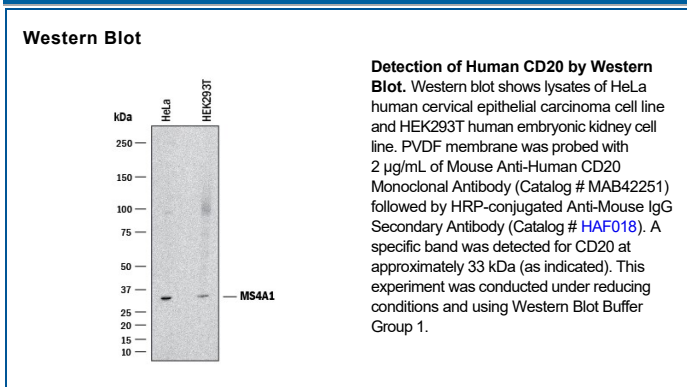
<b>Species Reactivity</b>	Human
<b>Specificity</b>	Detects human CD20 in direct ELISAs and Western blots.
<b>Source</b>	Monoclonal Mouse IgG <sub>2B</sub> Clone # 1027943
<b>Purification</b>	Protein A or G purified from hybridoma culture supernatant
<b>Immunogen</b>	Human CD20 Peptide. The epitope recognized by rituximab Binder M, et al. (2006) <b>108</b> :1975-8. doi: 10.1182/blood-2006-04-014639. Epub 2006 May 16. PMID: 16705086.
<b>Formulation</b>	Lyophilized from a 0.2 µm filtered solution in PBS with Trehalose. See Certificate of Analysis for details. *Small pack size (-SP) is supplied either lyophilized or as a 0.2 µm filtered solution in PBS.

## APPLICATIONS

**Please Note:** Optimal dilutions should be determined by each laboratory for each application. [General Protocols](#) are available in the Technical Information section on our website.

	<b>Recommended Concentration</b>	<b>Sample</b>
<b>Western Blot</b>	2 µg/mL	HeLa human cervical epithelial carcinoma cell line and HEK293T human embryonic kidney cell line

## DATA



## PREPARATION AND STORAGE

<b>Reconstitution</b>	Reconstitute at 0.5 mg/mL in sterile PBS.
<b>Shipping</b>	The product is shipped at ambient temperature. Upon receipt, store it immediately at the temperature recommended below. *Small pack size (-SP) is shipped with polar packs. Upon receipt, store it immediately at -20 to -70 °C
<b>Stability &amp; Storage</b>	<b>Use a manual defrost freezer and avoid repeated freeze-thaw cycles.</b> <ul style="list-style-type: none"> <li>• 12 months from date of receipt, -20 to -70 °C as supplied.</li> <li>• 1 month, 2 to 8 °C under sterile conditions after reconstitution.</li> <li>• 6 months, -20 to -70 °C under sterile conditions after reconstitution.</li> </ul>

## BACKGROUND

CD20 is a 297 amino acid (aa) non-glycosylated type III membrane protein that is the founding member of the MS4A tetraspanin protein family. It is expressed on pre-B, naïve and mature B lymphocytes and B-cell lymphomas. CD20 is associated with lipid rafts upon crosslinking, and appears to play a role in regulation of ion influx. The one extracellular segment of 48 aa shows 65% aa sequence identity between human and mouse CD20.