

DESCRIPTION

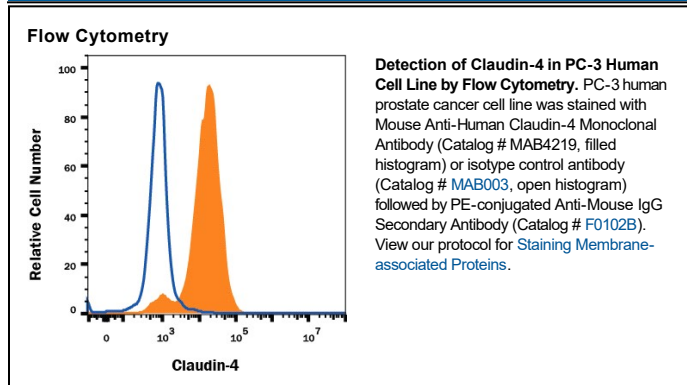
Species Reactivity	Human
Specificity	Detects human Claudin-4. Stains human Claudin-4 transfectants but not irrelevant transfectants. Recognizes an epitope in the first extracellular loop (aa Met29-Arg81).
Source	Monoclonal Mouse IgG _{2A} Clone # 382321
Purification	Protein A or G purified from hybridoma culture supernatant
Immunogen	NS0 mouse myeloma cell line transfected with human Claudin-4 Met1-Val209 Accession # NP_001296
Formulation	Lyophilized from a 0.2 µm filtered solution in PBS with Trehalose. See Certificate of Analysis for details. *Small pack size (-SP) is supplied either lyophilized or as a 0.2 µm filtered solution in PBS.

APPLICATIONS

Please Note: Optimal dilutions should be determined by each laboratory for each application. *General Protocols* are available in the *Technical Information* section on our website.

	Recommended Concentration	Sample
Flow Cytometry	0.25 µg/10 ⁶ cells	See Below
CyTOF-ready	Ready to be labeled using established conjugation methods. No BSA or other carrier proteins that could interfere with conjugation.	

DATA



PREPARATION AND STORAGE

Reconstitution	Reconstitute at 0.5 mg/mL in sterile PBS.
Shipping	The product is shipped at ambient temperature. Upon receipt, store it immediately at the temperature recommended below. *Small pack size (-SP) is shipped with polar packs. Upon receipt, store it immediately at -20 to -70 °C
Stability & Storage	Use a manual defrost freezer and avoid repeated freeze-thaw cycles. <ul style="list-style-type: none"> ● 12 months from date of receipt, -20 to -70 °C as supplied. ● 1 month, 2 to 8 °C under sterile conditions after reconstitution. ● 6 months, -20 to -70 °C under sterile conditions after reconstitution.

BACKGROUND

Claudin-4 is a multipass membrane protein in the claudin family of tight junction proteins. Claudin-4 is a 209 amino acid molecule with four transmembrane segments. It is preferentially expressed in intestinal mucosa epithelium and is involved in epithelial tissue development. It is also up-regulated in several carcinomas. Phosphorylation of Claudin-4 regulates paracellular epithelial permeability. Human Claudin-4 shares 83% aa sequence identity with mouse and rat Claudin-4.