

DESCRIPTION

Species Reactivity	Human
Specificity	Detects human Chorionic Gonadotropin, α Chain (α HCG) in direct ELISAs and Western blots. In direct ELISAs and Western blots, no cross-reactivity with recombinant human FSH β or recombinant rat FSH β is observed.
Source	Monoclonal Mouse IgG _{2A} Clone # 381012
Purification	Protein A or G purified from hybridoma culture supernatant
Immunogen	Mouse myeloma cell line NS0-derived recombinant human Chorionic Gonadotropin, α Chain (α HCG) Ala25-Ser116 Accession # P01215
Formulation	Lyophilized from a 0.2 μ m filtered solution in PBS with Trehalose. See Certificate of Analysis for details. *Small pack size (-SP) is supplied either lyophilized or as a 0.2 μ m filtered solution in PBS.

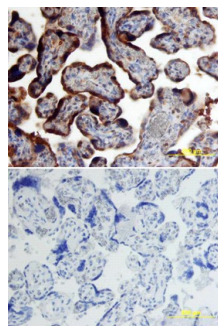
APPLICATIONS

Please Note: Optimal dilutions should be determined by each laboratory for each application. *General Protocols* are available in the *Technical Information* section on our website.

	Recommended Concentration	Sample
Western Blot	1 μ g/mL	Recombinant Human Chorionic Gonadotropin, α Chain (α HCG)
Immunohistochemistry	8-25 μ g/mL	See Below

DATA

Immunohistochemistry



Chorionic Gonadotropin, α Chain (α HCG) in Human Placenta. Chorionic Gonadotropin, α Chain (α HCG) was detected in immersion fixed paraffin-embedded sections of human placenta using Mouse Anti-Human Chorionic Gonadotropin, α Chain (α HCG) Monoclonal Antibody (Catalog # MAB4169) at 15 μ g/mL overnight at 4 °C. Tissue was stained using the Anti-Mouse HRP-DAB Cell & Tissue Staining Kit (brown; Catalog # CTS002) and counterstained with hematoxylin (blue). Lower panel shows a lack of labeling if primary antibodies are omitted and tissue is stained only with secondary antibody followed by incubation with detection reagents. View our protocol for [Chromogenic IHC Staining of Paraffin-embedded Tissue Sections](#).

PREPARATION AND STORAGE

Reconstitution	Reconstitute at 0.5 mg/mL in sterile PBS.
Shipping	The product is shipped at ambient temperature. Upon receipt, store it immediately at the temperature recommended below. *Small pack size (-SP) is shipped with polar packs. Upon receipt, store it immediately at -20 to -70 °C
Stability & Storage	Use a manual defrost freezer and avoid repeated freeze-thaw cycles. <ul style="list-style-type: none"> ● 12 months from date of receipt, -20 to -70 °C as supplied. ● 1 month, 2 to 8 °C under sterile conditions after reconstitution. ● 6 months, -20 to -70 °C under sterile conditions after reconstitution.

BACKGROUND

Human Chorionic Gonadotropin, α chain (CGA) is a 92 aa glycopeptide that functions as the shared α subunit of the heterodimeric peptide hormones chorionic gonadotropin, luteinizing hormone, thyroid stimulating hormone, and follicle stimulating hormone. CGA circulates as a free molecule and in noncovalent complexes with the unique β subunits of those hormones. CGA is secreted by the pituitary and placenta. Mature human CGA shares 69%-73% aa sequence identity with canine, equine, feline, mouse, porcine, and rat CGA.