

## DESCRIPTION

<b>Species Reactivity</b>	Human
<b>Specificity</b>	Detects human Serpin B8/Proteinase Inhibitor 8 in direct ELISAs. In direct ELISAs, approximately 25% cross-reactivity with recombinant mouse (rm) Serpin B8 is observed. No cross-reactivity with recombinant human Serpin A1, A3, A4, A5, A6, A9, A11, A12, B3, B6, B9, C1, D1, E1, E2, F1, F2, G1, I1, I2, rmSerpin A1, A3N, A6, A9, C1, D1, E1, E2, F1, F2, I1, recombinant rat (rr) Serpin A6, or rrSerpin A12 is observed.
<b>Source</b>	Monoclonal Mouse IgG <sub>2A</sub> Clone # 423023
<b>Purification</b>	Protein A or G purified from hybridoma culture supernatant
<b>Immunogen</b>	<i>S. frugiperda</i> insect ovarian cell line Sf21-derived recombinant human Serpin B8/Proteinase Inhibitor 8 Asp2-Pro374 Accession # P50452
<b>Formulation</b>	Lyophilized from a 0.2 µm filtered solution in PBS with Trehalose. See Certificate of Analysis for details. *Small pack size (-SP) is supplied either lyophilized or as a 0.2 µm filtered solution in PBS.

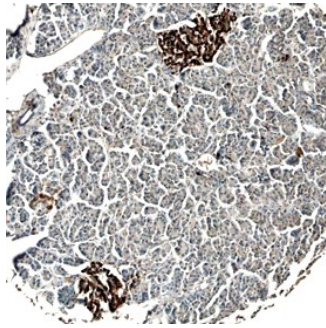
## APPLICATIONS

**Please Note:** Optimal dilutions should be determined by each laboratory for each application. General Protocols are available in the Technical Information section on our website.

	Recommended Concentration	Sample
<b>Immunohistochemistry</b>	8-25 µg/mL	See Below

## DATA

### Immunohistochemistry



**Serpin B8/Proteinase Inhibitor 8 in Human Pancreas.** Serpin B8/Proteinase Inhibitor 8 was detected in immersion fixed paraffin-embedded sections of human pancreas using Human Serpin B8 Monoclonal Antibody (Catalog # MAB4158) at 15 µg/mL overnight at 4 °C. Before incubation with the primary antibody, tissue was subjected to heat-induced epitope retrieval using Antigen Retrieval Reagent-Basic (Catalog # CTS013). Tissue was stained using the Anti-Mouse HRP-DAB Cell & Tissue Staining Kit (brown; Catalog # CTS002) and counterstained with hematoxylin (blue). View our protocol for [Chromogenic IHC Staining of Paraffin-embedded Tissue Sections](#).

## PREPARATION AND STORAGE

<b>Reconstitution</b>	Sterile PBS to a final concentration of 0.5 mg/mL.
<b>Shipping</b>	The product is shipped at ambient temperature. Upon receipt, store it immediately at the temperature recommended below. *Small pack size (-SP) is shipped with polar packs. Upon receipt, store it immediately at -20 to -70 °C
<b>Stability &amp; Storage</b>	<b>Use a manual defrost freezer and avoid repeated freeze-thaw cycles.</b> <ul style="list-style-type: none"> <li>• 12 months from date of receipt, -20 to -70 °C as supplied.</li> <li>• 1 month, 2 to 8 °C under sterile conditions after reconstitution.</li> <li>• 6 months, -20 to -70 °C under sterile conditions after reconstitution.</li> </ul>

## BACKGROUND

Serpin B8 (serine proteinase inhibitor-clade B #8; also P18) is a 42-45 kDa, cytoplasmic and secreted member of the ovalbumin (clade B)-subfamily, Serpin superfamily of protease inhibitors. It is produced by multiple cell types and shows inhibitory activity towards furin and other proteinases such as chymotrypsin. Human Serpin B8 is 374 amino acids (aa) in length. Although it has no signal sequence, it is released by platelets. The active inhibitor site lies between Arg336 and Arg342. One potential isoform shows a 2 aa substitution for the C-terminal 134 amino acids. Full length human Serpin B8 shares 78% and 83% aa identity with mouse and canine Serpin B8, respectively.