

DESCRIPTION

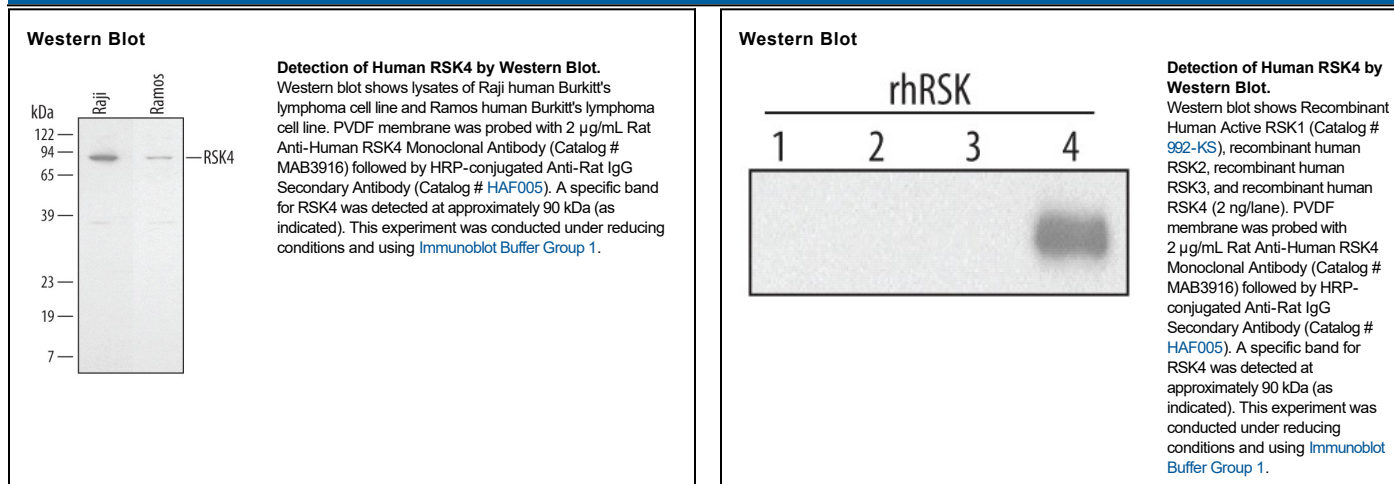
Species Reactivity	Human
Specificity	Detects human RSK4 in Western blots. In Western blots, no cross-reactivity with recombinant human (rh) RSK1, rhRSK2, or rhRSK3 is observed.
Source	Monoclonal Rat IgG _{2A} Clone # 374521
Purification	Protein A or G purified from hybridoma culture supernatant
Immunogen	<i>E. coli</i> -derived recombinant human RSK4 Met1-Leu745 Accession # Q9UK32
Formulation	Lyophilized from a 0.2 µm filtered solution in PBS with Trehalose. See Certificate of Analysis for details. *Small pack size (-SP) is supplied either lyophilized or as a 0.2 µm filtered solution in PBS.

APPLICATIONS

Please Note: Optimal dilutions should be determined by each laboratory for each application. [General Protocols](#) are available in the Technical Information section on our website.

	Recommended Concentration	Sample
Western Blot	2 µg/mL	See Below

DATA



PREPARATION AND STORAGE

Reconstitution	Reconstitute at 0.5 mg/mL in sterile PBS.
Shipping	The product is shipped at ambient temperature. Upon receipt, store it immediately at the temperature recommended below. *Small pack size (-SP) is shipped with polar packs. Upon receipt, store it immediately at -20 to -70 °C
Stability & Storage	Use a manual defrost freezer and avoid repeated freeze-thaw cycles. <ul style="list-style-type: none"> 12 months from date of receipt, -20 to -70 °C as supplied. 1 month, 2 to 8 °C under sterile conditions after reconstitution. 6 months, -20 to -70 °C under sterile conditions after reconstitution.

BACKGROUND

The 90 kDa ribosomal protein S6 kinases (RSK1-4) are a family of broadly expressed Ser/Thr kinases frequently activated in response to mitogenic stimuli, including growth factors and tumor-promoting phorbol esters. RSK4, also known as RPS6KA6, is commonly deleted in patients with complex X-linked mental retardation. Unlike other RSKs, RSK4 is constitutively active in serum-starved cells, and may participate in non-growth factor signaling.