

DESCRIPTION

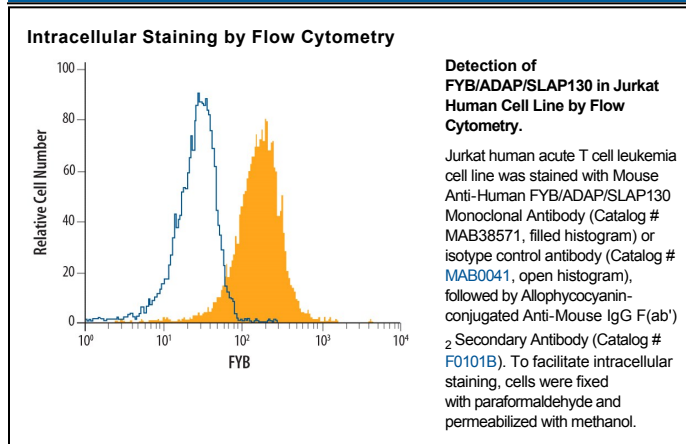
Species Reactivity	Human
Specificity	Detects human FYB/ADAP/SLAP130 in direct ELISAs.
Source	Monoclonal Mouse IgG _{2B} Clone # 460107
Purification	Protein A or G purified from hybridoma culture supernatant
Immunogen	<i>E. coli</i> -derived recombinant human FYB/ADAP/SLAP130 Ala2-Gly274 Accession # O15117
Formulation	Lyophilized from a 0.2 µm filtered solution in PBS with Trehalose. See Certificate of Analysis for details. *Small pack size (-SP) is supplied as a 0.2 µm filtered solution in PBS.

APPLICATIONS

Please Note: Optimal dilutions should be determined by each laboratory for each application. *General Protocols* are available in the *Technical Information* section on our website.

	Recommended Concentration	Sample
Intracellular Staining by Flow Cytometry	0.25 µg/10 ⁶ cells	See Below
CyTOF-ready	Ready to be labeled using established conjugation methods. No BSA or other carrier proteins that could interfere with conjugation.	

DATA



PREPARATION AND STORAGE

Reconstitution	Reconstitute at 0.5 mg/mL in sterile PBS.
Shipping	The product is shipped at ambient temperature. Upon receipt, store it immediately at the temperature recommended below. *Small pack size (-SP) is shipped with polar packs. Upon receipt, store it immediately at -20 to -70 °C
Stability & Storage	Use a manual defrost freezer and avoid repeated freeze-thaw cycles. <ul style="list-style-type: none"> ● 12 months from date of receipt, -20 to -70 °C as supplied. ● 1 month, 2 to 8 °C under sterile conditions after reconstitution. ● 6 months, -20 to -70 °C under sterile conditions after reconstitution.

BACKGROUND

Human SH2 domain containing leukocyte protein-76-Associated Phosphoprotein of 130 kDa (SLAP130), also known as Fyb-120 and ADAP, is an 86 kDa, 783 amino acid, cytoplasmic protein that runs anomalously as a 120-130 kDa protein in SDS-PAGE. Human SLAP130 is a hematopoietic-specific adaptor that associates with other cytoplasmic proteins such as SH2-containing Leukocyte Phosphoprotein of 76 kDa (SLP-76). Adaptors integrate signals from surface receptors and are essential components of many immune cell-signaling cascades. There is at least one known alternatively-spliced SLAP130 isoform which contains an additional 46 aa. Over the region used as immunogen, SLAP130 is 66% and 76% identical to the corresponding canine and mouse proteins, respectively.