

**DESCRIPTION**

<b>Species Reactivity</b>	Human
<b>Specificity</b>	Detects human PAR1 in direct ELISAs.
<b>Source</b>	Monoclonal Mouse IgG <sub>1</sub> Clone # 1028505
<b>Purification</b>	Protein A or G purified from hybridoma culture supernatant
<b>Immunogen</b>	Human PAR1 synthetic peptide Accession # P25116
<b>Formulation</b>	Lyophilized from a 0.2 µm filtered solution in PBS with Trehalose. See Certificate of Analysis for details. *Small pack size (-SP) is supplied either lyophilized or as a 0.2 µm filtered solution in PBS.

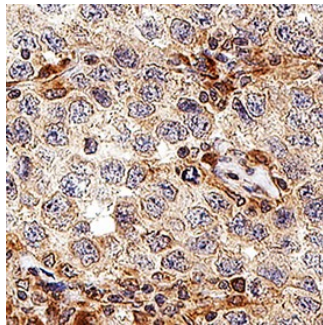
**APPLICATIONS**

**Please Note:** Optimal dilutions should be determined by each laboratory for each application. *General Protocols* are available in the *Technical Information* section on our website.

	<b>Recommended Concentration</b>	<b>Sample</b>
<b>Immunohistochemistry</b>	5-25 µg/mL	Immersion fixed paraffin-embedded sections of human breast cancer tissue

**DATA**

**Immunohistochemistry**



**PAR1 in Human Breast Cancer Tissue.**  
PAR1 was detected in immersion fixed paraffin-embedded sections of human breast cancer tissue using Mouse Anti-Human PAR1 Monoclonal Antibody (Catalog # MAB38551) at 5 µg/mL for 1 hour at room temperature followed by incubation with the Anti-Mouse IgG VisUCyte™ HRP Polymer Antibody (Catalog # VC001). Before incubation with the primary antibody, tissue was subjected to heat-induced epitope retrieval using Antigen Retrieval Reagent-Basic (Catalog # CTS013). Tissue was stained using DAB (brown) and counterstained with hematoxylin (blue). Specific staining was localized to cell membrane and cytoplasm in cancer cells. Staining was performed using our protocol for IHC Staining with VisUCyte HRP Polymer Detection Reagents.

**PREPARATION AND STORAGE**

<b>Reconstitution</b>	Reconstitute at 0.5 mg/mL in sterile PBS.
<b>Shipping</b>	The product is shipped at ambient temperature. Upon receipt, store it immediately at the temperature recommended below. *Small pack size (-SP) is shipped with polar packs. Upon receipt, store it immediately at -20 to -70 °C
<b>Stability &amp; Storage</b>	<b>Use a manual defrost freezer and avoid repeated freeze-thaw cycles.</b> <ul style="list-style-type: none"> <li>• 12 months from date of receipt, -20 to -70 °C as supplied.</li> <li>• 1 month, 2 to 8 °C under sterile conditions after reconstitution.</li> <li>• 6 months, -20 to -70 °C under sterile conditions after reconstitution.</li> </ul>

**BACKGROUND**

Human Proteinase-Activated Receptor 1 (hPAR1), also known as thrombin receptor, is a 65-70 kDa, 399 amino acid long member of the seven-transmembrane superfamily of cell-surface G protein-coupled receptors. PAR1 is activated by thrombin cleavage of its N-terminal propeptide in the extracellular domain. Human PAR1 is widely expressed in many cell types including endothelial cells, and it has been implicated in a variety of inflammatory responses. Over the regions used as immunogen, human and mouse PAR1 proteins are 58% identical in the region spanning the propeptide and extracellular domains, and 84% identical in the cytoplasmic tail.