

## DESCRIPTION

<b>Species Reactivity</b>	Human
<b>Specificity</b>	Detects human CD8 $\alpha$ in direct ELISAs.
<b>Source</b>	Monoclonal Mouse IgG <sub>1</sub> Clone # 37020
<b>Purification</b>	Protein A or G purified from hybridoma culture supernatant
<b>Immunogen</b>	Mouse myeloma cell line NS0-derived recombinant human CD8 $\alpha$ Ser22-Val198 Accession # NP_741696
<b>Formulation</b>	Lyophilized from a 0.2 $\mu$ m filtered solution in PBS with Trehalose. See Certificate of Analysis for details. *Small pack size (-SP) is supplied either lyophilized or as a 0.2 $\mu$ m filtered solution in PBS.

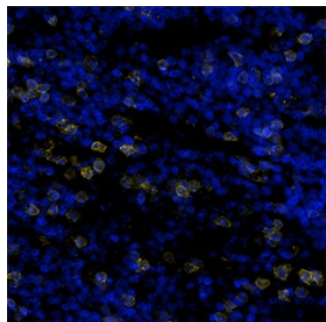
## APPLICATIONS

**Please Note:** Optimal dilutions should be determined by each laboratory for each application. [General Protocols](#) are available in the Technical Information section on our website.

	<b>Recommended Concentration</b>	<b>Sample</b>
<b>Multiplex Immunofluorescence</b>	15 $\mu$ g/mL	Immersion fixed paraffin embedded sections of human hodkins lymphoma
<b>Immunohistochemistry</b>	5-25 $\mu$ g/mL	See Below

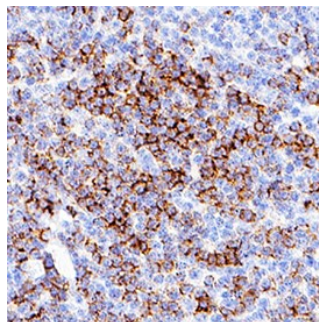
## DATA

### Multiplex Immunofluorescence



**Detection of CD8 $\alpha$  in Hodgkins Lymphoma via Multiplex Immunofluorescence staining on COMET™** CD8 $\alpha$  was detected in immersion fixed paraffin-embedded sections of Hodgkins Lymphoma using Mouse Anti-Human CD8 $\alpha$  Monoclonal Antibody (Catalog # [MAB3801](#)) at 15  $\mu$ g/mL at 37 ° Celsius for 2 minutes. Before incubation with the primary antibody, tissue underwent an all-in-one dewaxing and antigen retrieval preprocessing using PreTreatment Module (PT Module) and Dewax and HIER Buffer H (pH 9). Tissue was stained using the Alexa Fluor™ 647 Goat anti-Mouse IgG Secondary Antibody at 1:200 at 37 ° Celsius for 2 minutes. (Yellow; Lunaphore Catalog # [DR647MS](#)) and counterstained with DAPI (blue; Lunaphore Catalog # [DR100](#)). Protocol available in COMET™ Panel Builder.

### Immunohistochemistry



**CD8 $\alpha$  in Human Tonsil.** CD8 $\alpha$  was detected in immersion fixed paraffin-embedded sections of human tonsil using Mouse Anti-Human CD8 $\alpha$  Monoclonal Antibody (Catalog # [MAB3801](#)) at 5  $\mu$ g/mL for 1 hour at room temperature followed by incubation with the Anti-Mouse IgG VisUCyte™ HRP Polymer Antibody (Catalog # [VC001](#)). Before incubation with the primary antibody, tissue was subjected to heat-induced epitope retrieval using Antigen Retrieval Reagent-Basic (Catalog # [CTS013](#)). Tissue was stained using DAB (brown) and counterstained with hematoxylin (blue). Specific staining was localized to cell surfaces in lymphocytes. View our protocol for IHC Staining with VisUCyte HRP Polymer Detection Reagents.

## PREPARATION AND STORAGE

<b>Reconstitution</b>	Reconstitute at 0.5 mg/mL in sterile PBS. For liquid material, refer to CoA for concentration.
<b>Shipping</b>	Lyophilized product is shipped at ambient temperature. Liquid small pack size (-SP) is shipped with polar packs. Upon receipt, store immediately at the temperature recommended below.
<b>Stability &amp; Storage</b>	<b>Use a manual defrost freezer and avoid repeated freeze-thaw cycles.</b> <ul style="list-style-type: none"> <li>12 months from date of receipt, -20 to -70 °C as supplied.</li> <li>1 month, 2 to 8 °C under sterile conditions after reconstitution.</li> <li>6 months, -20 to -70 °C under sterile conditions after reconstitution.</li> </ul>

## BACKGROUND

CD8 is a heterodimeric glycoprotein consisting of an  $\alpha$  and  $\beta$  chain. It is expressed on cytolytic T cells and functions in conjunction with the T cell receptor in the recognition of MHC/peptide complexes.