

DESCRIPTION

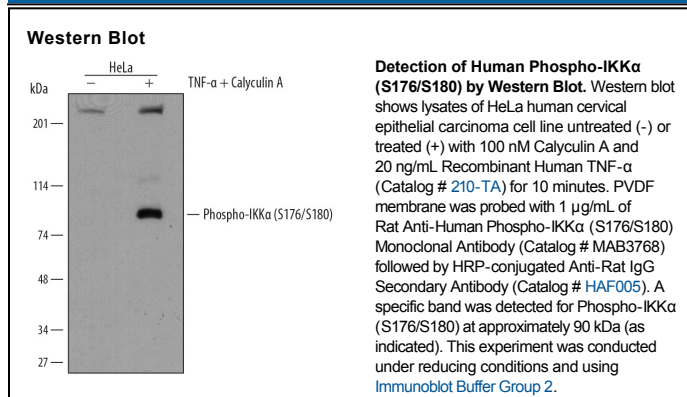
Species Reactivity	Human
Specificity	Detects human IKK α when phosphorylated at S176/S180.
Source	Monoclonal Rat IgG _{2A} Clone # 829177
Purification	Protein A or G purified from hybridoma culture supernatant
Immunogen	Phosphopeptide containing the human IKK α S176/S180 Accession # O15111
Formulation	Lyophilized from a 0.2 μ m filtered solution in PBS with Trehalose. See Certificate of Analysis for details. *Small pack size (-SP) is supplied as a 0.2 μ m filtered solution in PBS.

APPLICATIONS

Please Note: Optimal dilutions should be determined by each laboratory for each application. *General Protocols* are available in the *Technical Information* section on our website.

	Recommended Concentration	Sample
Western Blot	1 μ g/mL	See Below

DATA



PREPARATION AND STORAGE

Reconstitution	Sterile PBS to a final concentration of 0.5 mg/mL.
Shipping	The product is shipped at ambient temperature. Upon receipt, store it immediately at the temperature recommended below. *Small pack size (-SP) is shipped with polar packs. Upon receipt, store it immediately at -20 to -70 °C
Stability & Storage	Use a manual defrost freezer and avoid repeated freeze-thaw cycles. <ul style="list-style-type: none"> ● 12 months from date of receipt, -20 to -70 °C as supplied. ● 1 month, 2 to 8 °C under sterile conditions after reconstitution. ● 6 months, -20 to -70 °C under sterile conditions after reconstitution.

BACKGROUND

I κ B kinase alpha (IKK α) is also known as IKBKA, CHUK, and IKK1. The classical active IKK complex, composed of IKK α , IKK β , and two forms of processed IKK γ , phosphorylates and inactivates I κ B, resulting in the release and nuclear translocation of active NF- κ B. IKK α contains kinase, leucine zipper, and helix-loop-helix domains, and heterodimerizes with IKK β . NF- κ B-inducing kinase (NIK) phosphorylates and activates IKK α .