

DESCRIPTION

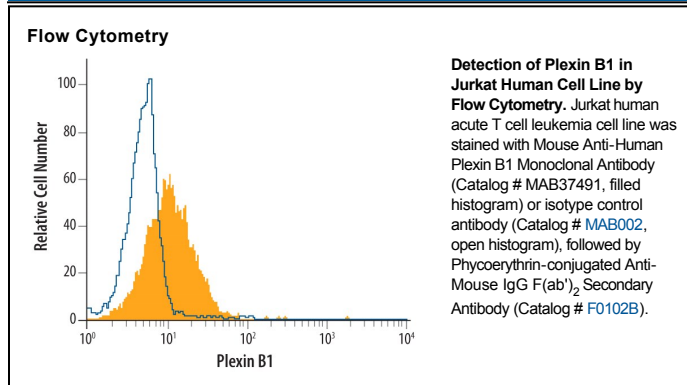
Species Reactivity	Human
Specificity	Detects human Plexin B1 in direct ELISAs.
Source	Monoclonal Mouse IgG ₁ Clone # 559830
Purification	Protein A or G purified from hybridoma culture supernatant
Immunogen	NS0 mouse myeloma cell line transfected with human Plexin B1 Accession # O43157
Formulation	Lyophilized from a 0.2 µm filtered solution in PBS with Trehalose. See Certificate of Analysis for details. *Small pack size (-SP) is supplied as a 0.2 µm filtered solution in PBS.

APPLICATIONS

Please Note: Optimal dilutions should be determined by each laboratory for each application. *General Protocols* are available in the *Technical Information* section on our website.

	Recommended Concentration	Sample
Flow Cytometry	2.5 µg/10 ⁶ cells	See Below
CyTOF-ready	Ready to be labeled using established conjugation methods. No BSA or other carrier proteins that could interfere with conjugation.	

DATA



PREPARATION AND STORAGE

Reconstitution	Reconstitute at 0.5 mg/mL in sterile PBS.
Shipping	The product is shipped at ambient temperature. Upon receipt, store it immediately at the temperature recommended below. *Small pack size (-SP) is shipped with polar packs. Upon receipt, store it immediately at -20 to -70 °C
Stability & Storage	Use a manual defrost freezer and avoid repeated freeze-thaw cycles. <ul style="list-style-type: none"> • 12 months from date of receipt, -20 to -70 °C as supplied. • 1 month, 2 to 8 °C under sterile conditions after reconstitution. • 6 months, -20 to -70 °C under sterile conditions after reconstitution.

BACKGROUND

Plexin B1 is a 300 kDa member of the B subfamily, Plexin family of Semaphorin receptors. Mature human Plexin B1 is a 2116 amino acid type I transmembrane (TM) glycoprotein that contains a 1471 aa extracellular domain (ECD) and a 612 aa cytoplasmic region. The ECD contains one Semaphorin domain, two PSI domains, and three IPT repeats. The ECD is cleaved into two subunits, a 200 kDa α-chain (aa 20-1305) and a 100 kDa TM β-chain. The subunits are nondisulfide-linked and generate a high-affinity receptor. Plexin B1 is a receptor for Semaphorin 4D/CD100. It forms a receptor complex with neuropilins, MET, and EGF R2. Of three known splice variants, one shows a deletion of aa 689-871, a second shows a 53 aa substitution for aa 677-2135, and a third shows a 53 aa substitution for the 53 aa between aa 677-729. Over aa 35-150, human Plexin B1 shares 90% and 97% aa sequence identity with dog and mouse Plexin B1, respectively.