

DESCRIPTION

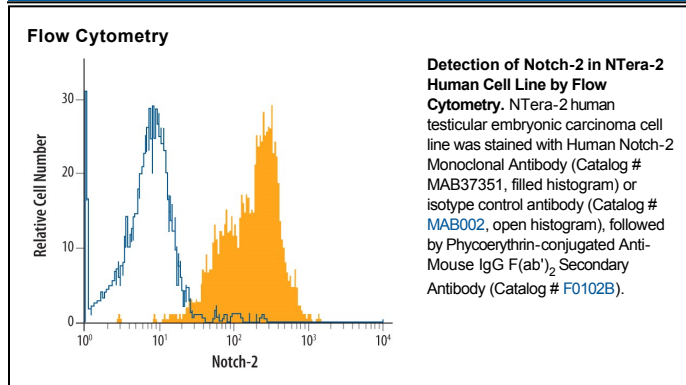
Species Reactivity	Human
Specificity	Detects human Notch-2 in direct ELISAs and Western blots. In Western blots, no cross-reactivity with recombinant human (rh) Notch-1 ICD, rhNotch-3 ECD, rhNotch-4 ICD, recombinant rat (rr) Notch-1 ECD, rrNotch-2 ECD, or rrDelta-1 is observed.
Source	Monoclonal Mouse IgG ₁ Clone # 602845
Purification	Protein A or G purified from hybridoma culture supernatant
Immunogen	Chinese hamster ovary cell line CHO-derived recombinant human Notch-2 Leu26-Gln530 Accession # Q04721
Formulation	Lyophilized from a 0.2 µm filtered solution in PBS with Trehalose. See Certificate of Analysis for details. *Small pack size (-SP) is supplied as a 0.2 µm filtered solution in PBS.

APPLICATIONS

Please Note: Optimal dilutions should be determined by each laboratory for each application. *General Protocols* are available in the *Technical Information* section on our website.

	Recommended Concentration	Sample
Flow Cytometry	2.5 µg/10 ⁶ cells	See Below
CyTOF-ready	Ready to be labeled using established conjugation methods. No BSA or other carrier proteins that could interfere with conjugation.	

DATA



PREPARATION AND STORAGE

Reconstitution	Sterile PBS to a final concentration of 0.5 mg/mL.
Shipping	The product is shipped at ambient temperature. Upon receipt, store it immediately at the temperature recommended below. *Small pack size (-SP) is shipped with polar packs. Upon receipt, store it immediately at -20 to -70 °C
Stability & Storage	Use a manual defrost freezer and avoid repeated freeze-thaw cycles. <ul style="list-style-type: none"> ● 12 months from date of receipt, -20 to -70 °C as supplied. ● 1 month, 2 to 8 °C under sterile conditions after reconstitution. ● 6 months, -20 to -70 °C under sterile conditions after reconstitution.

BACKGROUND

Notch-2 is a 300 kDa member of the Notch family of transmembrane (TM) proteins. The 2446 amino acid (aa) type I TM glycoprotein undergoes Golgi processing to generate a heterodimer of 180 kDa disulfide-linked extracellular domain (ECD) and 110 kDa membrane bound segments. Binding of Notch ligands, including Jagged and Delta-like molecules, has been localized to the 11th and 12th EGF-like repeats, aa 415-492. Human Notch-2 ECD (aa 26-530) shares 93% aa identity with mouse or rat Notch-2 ECD.