

DESCRIPTION

Species Reactivity	Human
Specificity	Stains human Claudin-6 transfected cells but not irrelevant transfectants.
Source	Monoclonal Mouse IgG _{2B} Clone # 342927
Purification	Protein A or G purified from hybridoma culture supernatant
Immunogen	NS0 mouse myeloma cell line transfected with human Claudin-6 Met1-Val220 Accession # P56747
Formulation	Lyophilized from a 0.2 µm filtered solution in PBS with Trehalose. See Certificate of Analysis for details. *Small pack size (-SP) is supplied as a 0.2 µm filtered solution in PBS.

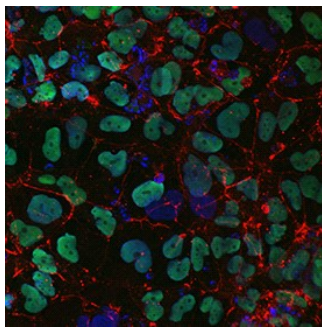
APPLICATIONS

Please Note: Optimal dilutions should be determined by each laboratory for each application. General Protocols are available in the Technical Information section on our website.

	Recommended Concentration	Sample
Flow Cytometry	2.5 µg/10 ⁶ cells	HEK293 human embryonic kidney cell line
Immunocytochemistry	8-25 µg/mL	See Below
CyTOF-ready	Ready to be labeled using established conjugation methods. No BSA or other carrier proteins that could interfere with conjugation.	

DATA

Immunocytochemistry



Claudin-6 in iPS2 Human Induced Pluripotent Stem Cells. Claudin-6 was detected in immersion fixed iPS2 human induced pluripotent stem cells, differentiated into definitive endoderm with StemXVivo Endoderm Kit (Catalog # SC019), using Mouse Anti-Human Claudin-6 Monoclonal Antibody (Catalog # MAB3656) at 10 µg/mL for 3 hours at room temperature. Cells were stained using the NorthernLights™ 557-conjugated Anti-Mouse IgG Secondary Antibody (red; Catalog # NL007) and counterstained with DAPI (blue). SOX17 was also detected using Goat Anti-Human SOX17 Antigen Affinity-purified Polyclonal Antibody (green; Catalog # AF1924). Specific staining of Claudin-6 was localized to cell surfaces. View our protocol for [Fluorescent ICC Staining of Stem Cells on Coverslips](#).

PREPARATION AND STORAGE

Reconstitution	Reconstitute at 0.5 mg/mL in sterile PBS.
Shipping	The product is shipped at ambient temperature. Upon receipt, store it immediately at the temperature recommended below. *Small pack size (-SP) is shipped with polar packs. Upon receipt, store it immediately at -20 to -70 °C
Stability & Storage	Use a manual defrost freezer and avoid repeated freeze-thaw cycles. <ul style="list-style-type: none"> ● 12 months from date of receipt, -20 to -70 °C as supplied. ● 1 month, 2 to 8 °C under sterile conditions after reconstitution. ● 6 months, -20 to -70 °C under sterile conditions after reconstitution.

BACKGROUND

Claudin-6 is a multipass transmembrane protein in the Claudin family. Claudin-6 is expressed by epithelial cells where it participates in tissue development and the maintenance of tight junction integrity. Human Claudin-6 shares 88% and 86% amino acid sequence identity with mouse and rat Claudin-6, respectively.