

## DESCRIPTION

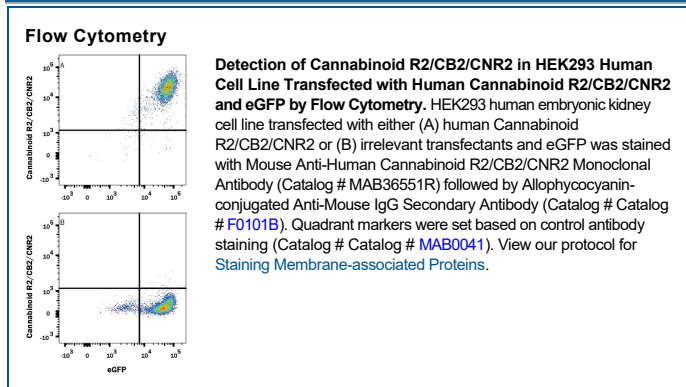
<b>Species Reactivity</b>	Human
<b>Specificity</b>	Detects human Cannabinoid R2/CB2/CNR2 in HEK293 human cell line transfected with human Cannabinoid R2/CB2/CNR2 and not Cannabinoid R1/CB1/CNR1 transfectants in flow cytometry.
<b>Source</b>	Recombinant Monoclonal Mouse IgG <sub>2B</sub> Clone # 352110R
<b>Purification</b>	Protein A or G purified from cell culture supernatant
<b>Immunogen</b>	Human embryonic kidney cell line HEK293-derived transfected with human Cannabinoid R2/CB2/CNR2 Met1-Cys360 Accession # NP_001832
<b>Formulation</b>	Lyophilized from a 0.2 µm filtered solution in PBS with Trehalose. See Certificate of Analysis for details. *Small pack size (-SP) is supplied either lyophilized or as a 0.2 µm filtered solution in PBS.

## APPLICATIONS

**Please Note:** Optimal dilutions should be determined by each laboratory for each application. *General Protocols* are available in the *Technical Information* section on our website.

	Recommended Concentration	Sample
<b>Flow Cytometry</b>	0.25 µg/10 <sup>6</sup> cells	See Below
<b>CyTOF-ready</b>	Ready to be labeled using established conjugation methods. No BSA or other carrier proteins that could interfere with conjugation.	

## DATA



## PREPARATION AND STORAGE

<b>Reconstitution</b>	Reconstitute at 0.5 mg/mL in sterile PBS.
<b>Shipping</b>	The product is shipped at ambient temperature. Upon receipt, store it immediately at the temperature recommended below. *Small pack size (-SP) is shipped with polar packs. Upon receipt, store it immediately at -20 to -70 °C
<b>Stability &amp; Storage</b>	<b>Use a manual defrost freezer and avoid repeated freeze-thaw cycles.</b> <ul style="list-style-type: none"> <li>• 12 months from date of receipt, -20 to -70 °C as supplied.</li> <li>• 1 month, 2 to 8 °C under sterile conditions after reconstitution.</li> <li>• 6 months, -20 to -70 °C under sterile conditions after reconstitution.</li> </ul>

## BACKGROUND

Cannabinoid R2 (Cannabinoid Receptor 2), also called CB2 or CNR2, is a 7TM protein that belongs to the family of G protein-coupled receptors, class A. Cannabinoid R2 is expressed in the periphery, notably by hematopoietic cells, in contrast to Cannabinoid R1 which is expressed predominantly in the central nervous system and gut. Cannabinoid R2 on lymphocytes and macrophages binds cannabinoids and modulates cytokine secretion. With the exception of their divergent C-terminal tails, human Cannabinoid R2 shares 82% amino acid sequence identity with mouse and rat Cannabinoid R2.