

DESCRIPTION

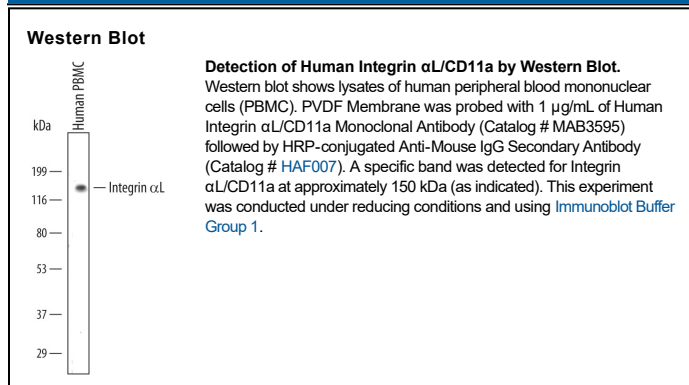
Species Reactivity	Human
Specificity	Detects human Integrin α L in Western blots.
Source	Monoclonal Mouse IgG ₁ Clone # 345913
Purification	Protein A or G purified from hybridoma culture supernatant
Immunogen	Chinese hamster ovary cell line CHO-derived recombinant human Integrin α L Tyr26-Met1089 (Tyr660Ile) Accession # CAA68747
Formulation	Lyophilized from a 0.2 μ m filtered solution in PBS with Trehalose. See Certificate of Analysis for details. *Small pack size (-SP) is supplied either lyophilized or as a 0.2 μ m filtered solution in PBS.

APPLICATIONS

Please Note: Optimal dilutions should be determined by each laboratory for each application. General Protocols are available in the Technical Information section on our website.

	Recommended Concentration	Sample
Western Blot	1 μ g/mL	See Below
Flow Cytometry	2.5 μ g/10 ⁶ cells	Human peripheral blood mononuclear cells
CyTOF-ready	Ready to be labeled using established conjugation methods. No BSA or other carrier proteins that could interfere with conjugation.	

DATA



PREPARATION AND STORAGE

Reconstitution	Reconstitute at 0.5 mg/mL in sterile PBS.
Shipping	The product is shipped at ambient temperature. Upon receipt, store it immediately at the temperature recommended below. *Small pack size (-SP) is shipped with polar packs. Upon receipt, store it immediately at -20 to -70 °C
Stability & Storage	Use a manual defrost freezer and avoid repeated freeze-thaw cycles. <ul style="list-style-type: none"> ● 12 months from date of receipt, -20 to -70 °C as supplied. ● 1 month, 2 to 8 °C under sterile conditions after reconstitution. ● 6 months, -20 to -70 °C under sterile conditions after reconstitution.

BACKGROUND

Integrin subunit α L/CD11a is a 180 kDa type I TM glycoprotein that interacts only with Integrin β 2/CD18 to form LFA-1, a leukocyte adhesion protein which binds endothelial cell ICAM. Human Integrin α L contains a 1064 aa extracellular domain (ECD), a 20 aa TM sequence and a 58 aa cytoplasmic domain. The ECD contains seven repeats that form a beta-propeller structure and one inserted vWA domain (I domain) containing a metal ion-dependent adhesion site (MIDAS). Human and mouse Integrin α L ECD share 74% aa identity. A second isoform has a 53 aa insert in the ECD.