

## DESCRIPTION

<b>Species Reactivity</b>	Human
<b>Specificity</b>	Detects human CCR10 transfectants but not the parental cell line in Flow Cytometry.
<b>Source</b>	Recombinant Monoclonal Rat IgG <sub>2A</sub> Clone # 314305R
<b>Purification</b>	Protein A or G purified from cell culture supernatant
<b>Immunogen</b>	Y3 rat myeloid cell line transfected with human CCR10 Gln8-Asn362 Accession # P46092
<b>Formulation</b>	Lyophilized from a 0.2 µm filtered solution in PBS with Trehalose. See Certificate of Analysis for details. *Small pack size (-SP) is supplied either lyophilized or as a 0.2 µm filtered solution in PBS.

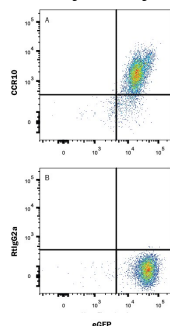
## APPLICATIONS

**Please Note:** Optimal dilutions should be determined by each laboratory for each application. [General Protocols](#) are available in the Technical Information section on our website.

	<b>Recommended Concentration</b>	<b>Sample</b>
<b>Flow Cytometry</b>	0.25 µg/10 <sup>6</sup> cells	See Below
<b>CyTOF-ready</b>	Ready to be labeled using established conjugation methods. No BSA or other carrier proteins that could interfere with conjugation.	

## DATA

### Flow Cytometry



**Detection of CCR10 in HEK293 Human Cell Line Transfected with Human CCR10 and eGFP by Flow Cytometry.** HEK293 human embryonic kidney cell line transfected with human CCR10 and eGFP was stained with (A) Rat Anti-Human CCR10 Monoclonal Antibody (Catalog # MAB3478R) or (B) Rat IgG<sub>2A</sub> Isotype Control (Catalog # MAB006) followed by APC-conjugated Anti-Rat IgG Secondary Antibody (Catalog # F0113). View our protocol for [Staining Membrane-associated Proteins](#).

## PREPARATION AND STORAGE

<b>Reconstitution</b>	Reconstitute at 0.5 mg/mL in sterile PBS.
<b>Shipping</b>	The product is shipped at ambient temperature. Upon receipt, store it immediately at the temperature recommended below. *Small pack size (-SP) is shipped with polar packs. Upon receipt, store it immediately at -20 to -70 °C
<b>Stability &amp; Storage</b>	<b>Use a manual defrost freezer and avoid repeated freeze-thaw cycles.</b> <ul style="list-style-type: none"> <li>● 12 months from date of receipt, -20 to -70 °C as supplied.</li> <li>● 1 month, 2 to 8 °C under sterile conditions after reconstitution.</li> <li>● 6 months, -20 to -70 °C under sterile conditions after reconstitution.</li> </ul>

## BACKGROUND

CCR10 is a G protein-linked seven transmembrane domain protein expressed by T cells and B cell subsets that function as a receptor for CCL27. CCR10 mediates lymphocyte migration to the skin and mucosa, and its expression correlates with the metastatic capacity of melanomas.