

#### DESCRIPTION

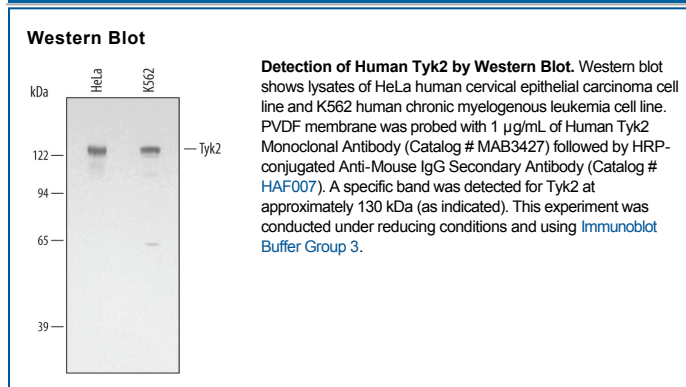
<b>Species Reactivity</b>	Human
<b>Specificity</b>	Detects human Tyk2 in Western blots.
<b>Source</b>	Monoclonal Mouse IgG <sub>3</sub> Clone # 307214
<b>Purification</b>	Protein A or G purified from hybridoma culture supernatant
<b>Immunogen</b>	<i>E. coli</i> -derived recombinant human Tyk2 Pro2-Leu51 Accession # P29597
<b>Formulation</b>	Lyophilized from a 0.2 µm filtered solution in TBS with Trehalose. See Certificate of Analysis for details. *Small pack size (-SP) is supplied as a 0.2 µm filtered solution in PBS.

#### APPLICATIONS

**Please Note:** Optimal dilutions should be determined by each laboratory for each application. *General Protocols* are available in the *Technical Information* section on our website.

	<b>Recommended Concentration</b>	<b>Sample</b>
<b>Western Blot</b>	1 µg/mL	See Below

#### DATA



#### PREPARATION AND STORAGE

<b>Reconstitution</b>	Reconstitute at 0.5 mg/mL in sterile PBS.
<b>Shipping</b>	The product is shipped at ambient temperature. Upon receipt, store it immediately at the temperature recommended below. *Small pack size (-SP) is shipped with polar packs. Upon receipt, store it immediately at -20 to -70 °C
<b>Stability &amp; Storage</b>	<b>Use a manual defrost freezer and avoid repeated freeze-thaw cycles.</b> <ul style="list-style-type: none"> <li>● 12 months from date of receipt, -20 to -70 °C as supplied.</li> <li>● 1 month, 2 to 8 °C under sterile conditions after reconstitution.</li> <li>● 6 months, -20 to -70 °C under sterile conditions after reconstitution.</li> </ul>

#### BACKGROUND

Tyk2 belongs to the Janus family of intracellular tyrosine kinases that are activated by receptors for many cytokines. Activation of Tyk2 occurs via phosphorylation at two adjacent tyrosine residues, Y1054 and Y1055, within the kinase domain. Tyk2 is required for interferon β-mediated tyrosine phosphorylation of STAT3 and interferon receptor 1. Mice lacking Tyk2 are susceptible to parasitic infection but resistant to autoimmune arthritis.