

## DESCRIPTION

<b>Species Reactivity</b>	Human
<b>Specificity</b>	Detects human DPCR-1 in direct ELISAs.
<b>Source</b>	Monoclonal Mouse IgG <sub>2B</sub> Clone # 986124
<b>Purification</b>	Protein A or G purified from hybridoma culture supernatant
<b>Immunogen</b>	Human DPCR-1 synthetic peptide Accession # Q3MIW9
<b>Formulation</b>	Lyophilized from a 0.2 µm filtered solution in PBS with Trehalose. See Certificate of Analysis for details. *Small pack size (-SP) is supplied either lyophilized or as a 0.2 µm filtered solution in PBS.

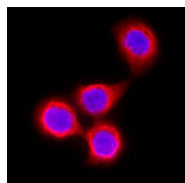
## APPLICATIONS

**Please Note:** Optimal dilutions should be determined by each laboratory for each application. [General Protocols](#) are available in the Technical Information section on our website.

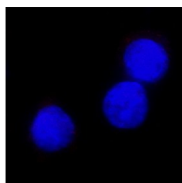
	<b>Recommended Concentration</b>	<b>Sample</b>
<b>Immunocytochemistry</b>	8-25 µg/mL	See Below

## DATA

### Immunocytochemistry



Positive (HT-29 cells)



Negative (U-87 MG cells)

**DPCR-1 in HT-29 Human Cell Line.** DPCR-1 was detected in immersion fixed HT-29 human colon adenocarcinoma cell line (positive control) and not U-87 MG human glioblastoma/astrocytoma cell line (negative control) using Mouse Anti-Human DPCR-1 Monoclonal Antibody (Catalog # MAB33471) at 8 µg/mL for 3 hours at room temperature. Cells were stained using the NorthernLights™ 557-conjugated Anti-Mouse IgG Secondary Antibody (red; Catalog # NL007) and counterstained with DAPI (blue). Specific staining was localized to cytoplasm. View our protocol for [Fluorescent ICC Staining of Cells on Coverslips](#).

## PREPARATION AND STORAGE

<b>Reconstitution</b>	Reconstitute at 0.5 mg/mL in sterile PBS.
<b>Shipping</b>	The product is shipped at ambient temperature. Upon receipt, store it immediately at the temperature recommended below. *Small pack size (-SP) is shipped with polar packs. Upon receipt, store it immediately at -20 to -70 °C
<b>Stability &amp; Storage</b>	<b>Use a manual defrost freezer and avoid repeated freeze-thaw cycles.</b> <ul style="list-style-type: none"> <li>• 12 months from date of receipt, -20 to -70 °C as supplied.</li> <li>• 1 month, 2 to 8 °C under sterile conditions after reconstitution.</li> <li>• 6 months, -20 to -70 °C under sterile conditions after reconstitution.</li> </ul>

## BACKGROUND

DPCR-1 (Diffuse Panbronchiolitis Critical Region 1) is encoded by a gene that maps to the chromosomal diffuse panbronchiolitis critical region. DPCR-1 is associated with susceptibility to this bronchiolar disease. It has homology with the mucin-like domain of zonadhesin. DPCR-1 is predominantly expressed in lung, kidney, and testis.